

APR 05 1996

COMMISSION

OTTAWA COUNTY REMONUMENTATION

LAND CORNER RECORDATION CERTIFICATE  
Filing Requirement of Act 74, Mich. P.A. 1970

For corners in

Ottawa (County)	Located In:	Corner Code #
1. Public Land Survey	Chester Twp. 9N 13W	G-9, NE <del>1/4</del> cor. Sec. 28
	T ___ R ___	_____
	T ___ R ___	_____
	T ___ R ___	_____
	T ___ R ___	_____
2. Property Controlling in Section	S ___ T ___ R ___	_____
	S ___ T ___ R ___	_____
3. Miscellaneous Property in Sec.	S ___ T ___ R ___	_____
	S ___ T ___ R ___	_____

RECORDED

95 NOV 29 PM 1:36

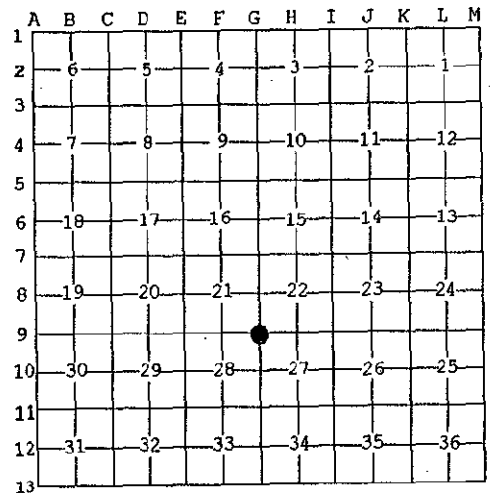
*Dyckie Ballman*  
REGISTER OF DEEDS  
OTTAWA COUNTY, MI

Register of Deeds Stamp & File Number

4. Lot No. \_\_\_\_\_, Recorded Plat \_\_\_\_\_  
5. Private Claims \_\_\_\_\_

I, Randal D. Feenstra, in a field survey on Nov. 6, 1995 do hereby state that under requirements of P.A. 74, Michigan P.A. of 1970, the corner points mentioned in lines 1 and 2 above were in conformance with regulations and rules therefore as required in the current manual of survey instructions of the United States Department of the Interior, Bureau of Land Management or by a decree of a Court of Law and /or that the corner points mentioned in lines 3, 4 and 5 above were in conformance with the rules of the Michigan Board of Land Surveyors or by a Decree of a Court of Law; established, re-established, monumented, recovered, found as expressed below.

NOTE: Not more than 2 corners, all in the same town and range, may be recorded on this certificate.



A. Description of original monument and accessories and/or subsequent restoration:

G.L.O. (1838) Russell Whitcomb 14" Sugar S69°E 28 lks. 8" Sugar N46°W 15 lks	L-3, P-110, (1976) 1" Steel Bar P. Pole NE48.47 Guy Pole NW49.35 Tel. Pole SW52.92 St. Sign SE33.0'	L-4, P-266 (1981) C.I.M. P. Pole NE51.27 Guy Pole NW55.60 T. Pole SW60.35 St. Sign SE49.35'	L-5, P-241 (1992) C.I.M. P. Pole N30°E 51.32' P. Pole N30°W 55.65' "X" in N End culv. N35°E 42.92' "X" in S end culv. S50°W 41.35'
---	--	--	---

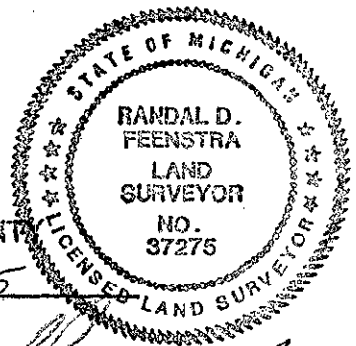
B. Description of corner evidence found and/or method applied in restoring or reestablishing corner.

Found: C.I.M. in Mon. box. Accepted as a careful and faithful perpetuation of the position of the original corner.

Pk SW side P Pole	NW	55.81'
Nail & Tag NW side P. Pole	NE	51.24'
"X" in N end 12" conc. culv.	S35°E	43.00'
"X" in S end 12" conc. culv.	S50°W	41.38'

P.A. 345 OTTAWA COUNTY  
PEER APPROVED 11/20/95

*Keddy P. Redwood*  
*RDM*



C. Description of monument for corner and accessories established to perpetuate locating the position of the corner:

G-9	C.I.M. in Mon. box		
	Ottawa County Remon Nail & Tag in SW side P. Pole	N32°W	55.84'
	Ottawa County Remon Nail & Tag in NW side P. Pole	N40°E	51.20'
	NW cor. conc. findn. (abandoned?) house	S68°E	99.71'
	NW cor. conc. findn. frame shed	S20°E	121.90'
	Centerline Coolidge St. (bit. road)	0.0'E	
	Centerline 24th Ave. (bit. road)	0.5'N	

Signed by *Randal D. Feenstra*  
Surveyor's Michigan License No. 37275

Date November 6, 1995