

APR 29 1996

**COMMISSION**

JUDITH D. ROEHM  
Ontonagon County

05/09/95  
13:47

3/262 JEM Fee: .00  
Page 1 of 1

**LAND CORNER RECORDATION CERTIFICATE**  
Filing Requirement of Act 74, Mich. P.A. 1970

For corners in  
ONTONAGON  
(County)

Located In: Corner Code #

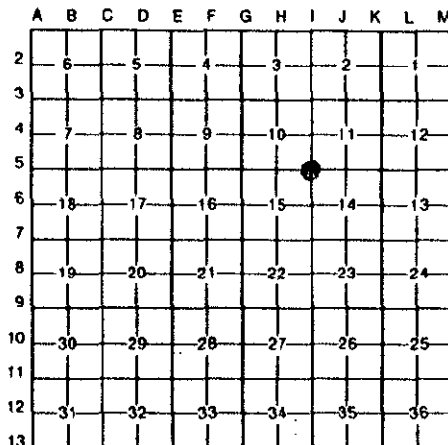
- |                                    |   |      |   |      |     |
|------------------------------------|---|------|---|------|-----|
| 1. Public Land Survey              | T | 47N. | R | 39W. | I-5 |
|                                    | T |      | R |      |     |
|                                    | T |      | R |      |     |
|                                    | T |      | R |      |     |
| 2. Property Controlling in Section | S |      | T |      | R   |
|                                    | S |      | T |      | R   |
| 3. Miscellaneous Property in Sec.  | S |      | T |      | R   |
|                                    | S |      | T |      | R   |

Register of Deeds Stamp & File Number

4. Lot No. \_\_\_\_\_, Recorded Plat \_\_\_\_\_  
5. Private Claims \_\_\_\_\_

Section corner 10, 11, 14 & 15; T.47N., R.39W.

I, Richard L. Drahn, in a field survey on OCTOBER 01, 19 94, do hereby certify that under requirements of P.A. 74, Michigan P.A. of 1970, the corner points mentioned in lines 1 and 2 above were in conformance with regulations and rules therefore as required in the current manual of survey instructions of the United States Department of the Interior, Bureau of Land Management or by a decree of a Court of Law and/or that the corner points mentioned in lines 3, 4 and 5 above were in conformance with the rules of the Michigan Board of Land Surveyors or by a Decree of a Court of Law; established, re-established, monumented, re-monumented, recovered, found as expressed below:



**NOTE: Not more than 4 corners, all in the same town and range, may be recorded on this certificate.**

**A. Description of original monument and accessories and/or subsequent restoration:**

Corner established by Zelotes B. Searls, US Deputy Surveyor, on June 11, 1851. Original bearing trees:

Cedar	14"	S.55E.	18 links	(11.88 feet)
Hemlock	22"	N.40W.	13 links	( 8.58 feet)

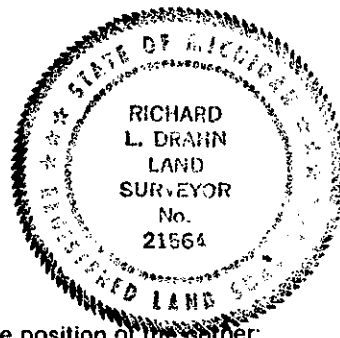
Reference Act 74 recorded in Liber 3; page 18 of Ontonagon County corner records on September 21, 1987.

**B. Description of corner evidence found and/or method applied in restoring or reestablishing corner:**

Corner remains as monumented on July 21, 1986, except that the Reference Monument has been relocated from the south side of the east-west county road to the north side.

**ONTONAGON COUNTY  
PEER APPROVED**

*Carl W. Applekamp  
Ont. Co. Rep.  
Jan 25, 1995*



**C. Description of monument for corner and accessories established to perpetuate locating the position of the corner:**

From the previously described sub-surface brass capped monument, the following bearing trees/objects are located:

4"	Red Maple	N.35W.	57.47 feet
6"	Red Maple	S.70E.	83.30 feet
6"	Red Maple	S.05E.	29.40 feet
6'	Steel rail	North	40.80 feet

A standard 30" long aluminum reference monument with a 3 1/4" aluminum cap stamped to indicate the true corner position bears North, 39.34 feet.

Signed by Richard L. Drahn

Date January 24, 1995

Surveyor's Michigan License No. 21564