

SURVEY & REMONUMENTATION

APR 29 1996

COMMISSION

JUDITH D. ROEHN
Ontonagon County
LC 3/307 JEM Fee: 9.00
Page 1 of 1

LAND CORNER RECORDATION CERTIFICATE Filing Requirement of Act 74, Mich. P.A. 1970

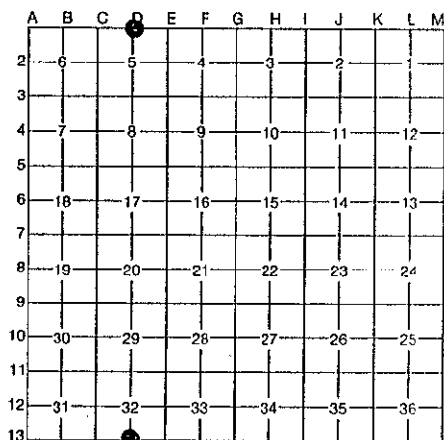
For corners in	<u>ONTONAGON</u> <small>(County)</small>	Located In:	Corner Code #
1. Public Land Survey	T <u>48</u> R <u>40</u>		<u>D-13</u>
	T <u>47</u> R <u>40</u>		<u>D-1</u> ✓
	T _____ R _____		_____
	T _____ R _____		_____
2. Property Controlling in Section	S _____ T _____ R _____		_____
	S _____ T _____ R _____		_____
3. Miscellaneous Property in Section	S _____ T _____ R _____		_____
	S _____ T _____ R _____		_____

Register of Deeds Stamp & File Number

4. Lot No. _____, Recorded Plat _____

5. Private Claims _____

$\frac{1}{4}$ Corner common to Sections 32 & 5, T48N R40W & T47N R40W



I, Earl W. Applekamp, in a field survey on August 03, 19 95, do hereby certify that under requirements of P.A. 74, Michigan P.A. of 1970, the corner points mentioned in lines 1 and 2 above were in conformance with regulations and rules therefore as required in the current manual of survey instructions of the United States Department of the Interior, Bureau of Land Management or by a decree of a Court of Law and/or that the corner points mentioned in lines 3, 4 and 5 above were in conformance with the rules of the Michigan Board of Professional Surveyors or by a Decree of a Court of Law; established, re-established, monumented, re-monumented, recovered, found as expressed below:

NOTE: Not more than 4 corners, all in the same town and range, may be recorded on this certificate.

A. Description of original monument and accessories and/or subsequent restoration:

Original corner established by Wills Burt, U.S. Deputy Surveyor, June 1857. Set Maple Post.

ORIGINAL BEARING TREES:

Fir	14"	N30°E	7 links (4.62 feet)
Spruce	22"	North	32 links (21.12 feet)

B. Description of corner evidence found and/or method applied in restoring or reestablishing corner:

No original evidence was found. At the apparent position there was a fence line running North with a field West of fence and woods East of fence. South of the apparent position there was woods East and a field West. A measurement from the SE Corner of Section 32 to the SW Corner of 32 was 5243.88 feet. I monumented the corner by single proportionate measurement on a line between opposite Section Corners which falls at the location described above. I set a monument in the centerline of the road 4" below top of gravel surface. Monument is described in "C" below.

C. Description of monument for corner and accessories established to perpetuate locating the position of the corner:

At the corner position I set a 3/4"x24" aluminum rod with a 3/4" aluminum cap stamped to read: COUNTY REMONUMENTATION, T48N R40W, T47N R40W, $\frac{1}{4}$, S32 S5, 1995, P.S. 17610. I established the following bearing trees and reference objects.

8" Twin Tamarack	N51°E	76.98 feet - REA Power Pole	N74°W	150.50 feet
7" Aspen	S43°E	84.22 feet - Steel Sign Post	North	32.93 feet



PEER GROUP APPROVED

Earl W. Applekamp 9-20-95
COUNTY REPRESENTATIVE

Signed by Earl W. Applekamp

Date September 20, 1995

Surveyor's Michigan License No. 17610

307