

DEC 16 1996

COMMISSION

JUDITH D. ROEHM
Ontonagon County
LC 4/99 JEM

07/11/96
08:48
Fee: 9.00
Page 1 of 1

LAND CORNER RECORDATION CERTIFICATE
Filing Requirement of Act 74, Mich. P.A. 1970

For corners in

ONTONAGON
(County)

Located in:

Corner Code #

1. Public Land Survey

T47N R40W

J-1 ✓

T48N R40W

J-13

T R

T R

2. Property Controlling
in Section

S T R

S T R

3. Miscellaneous
Property in Sec.

S T R

S T R

4. Lot No. _____, Recorded Plat _____

5. Private Claims _____

1/4 Corner common to Sections 2 & 35, T47N, T48N R40W.

I, Earl W. Applekamp, in a field survey on May 16, 1996 do hereby state that under requirements of P.A. 74, Michigan P.A. of 1970, the corner points mentioned in lines 1 and 2 above were in conformance with regulations and rules therefore as required in the current manual of survey instructions of the United States Department of the Interior, Bureau of Land Management or by a decree of a Court of Law and for that the corner points mentioned in lines 3, 4 and 5 above were in conformance with the rules of the Michigan Board of Land Surveyors or by a Decree of a Court of Law; established, re-established, monumented, recovered, found as expressed below.

NOTE: Not more than 2 corners, all in the same town and range, may be recorded on this certificate.

A. Description of original monument and accessories and/or subsequent restoration:

Original corners established by John Burt, US Deputy Surveyor, July 12, 1850. Set Maple Post.

ORIGINAL BEARING TREES:

Fir 12" N72°E 21 links
Cedar 9" N41°W 16 links

B. Description of corner evidence found and/or method applied in restoring or reestablishing corner:

No original evidence was found. There is an old (60-70 years) dirt road running from opposite section corners East & West. A call to top of ridge 15 feet was in conformance with the GLO notes. An old fence line runs North & South from the corner position. Corner was set on line between opposite section corners and using the North-South fence line for departure. Single proportionate measure would put the corner 2 1/2' West.

Research on file with the Ontonagon County Remonumentation Representative.

C. Description of monument for corner and accessories established to perpetuate locating the position of the corner:

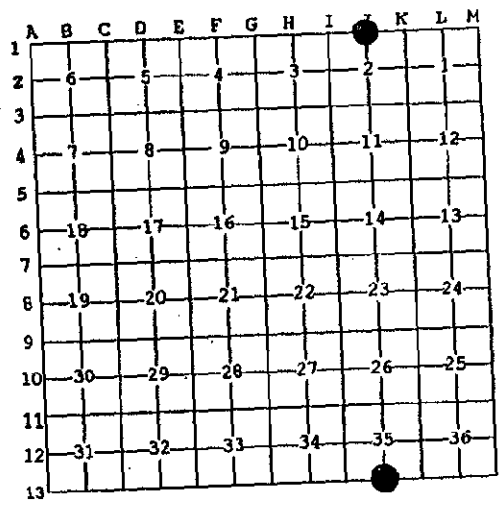
At the corner position I set a 2 1/2" X 30" aluminum pipe with a 3 1/4" cap 1" below the top of the dirt road. Cap is stamped to read: County Remonumentation, 1/4, T48N R40W, R39W, S35, S2, 1996, P.S. 17610. I established three bearing trees and one bearing object.

4" Maple N55°-10'-06"W 49.70' - 5" Maple S23°-13'-50"W 40.46'
12" Oak N29°-16'-14"E 12.59' - Steel Sign Post North 13.92'

PEER GROUP APPROVED

Earl W. Applekamp
COUNTY REPRESENTATIVE

07-08-96



Register of Deeds Stamp & File Number

Signed by Earl W. Applekamp
Surveyor's Michigan License No. 17610

Date June 24, 1996

