

LAND CORNER RECORDATION CERTIFICATE
 Filing Requirement of Act 74, Mich. P.A. 1970

For corners in

<u>ONTONAGON</u> (County)	Located In:	Corner Code #
1. Public Land Survey	T 48NR 38W	<u>A-6</u> ✓
	T 48NR 39W	M-6
	T ___ R ___	_____
	T ___ R ___	_____
2. Property Controlling in Section	S ___ T ___ R ___	_____
	S ___ T ___ R ___	_____
3. Miscellaneous Property in Sec.	S ___ T ___ R ___	_____
	S ___ T ___ R ___	_____

REMONUMENTATION

OCT 8 0 1997

COMMISSIONER

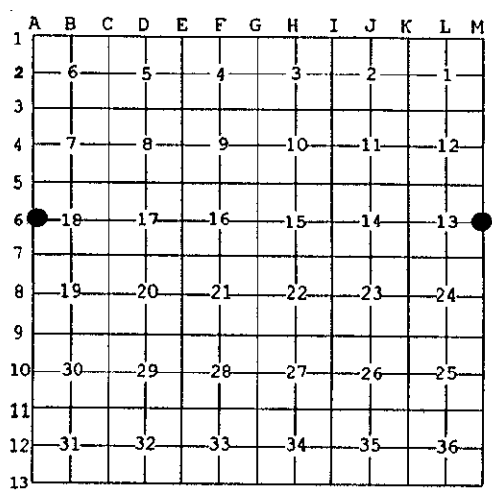
Register of Deeds Stamp & File Number

4. Lot No. _____, Recorded Plat _____
 5. Private Claims _____

1/4 Corner common to Sections 13 & 18, T48N R38 & 39W.

I, Earl W. Applekamp, in a field survey on June 10, 1997 do hereby state that under requirements of P.A. 74, Michigan P.A. of 1970, the corner points mentioned in lines 1 and 2 above were in conformance with regulations and rules therefore as required in the current manual of survey instructions of the United States Department of the Interior, Bureau of Land Management or by a decree of a Court of Law and /or that the corner points mentioned in lines 3, 4 and 5 above were in conformance with the rules of the Michigan Board of Land Surveyors or by a Decree of a Court of Law; established, re-established, monumented, recovered, found as expressed below:

NOTE: Not more than 2 corners, all in the same town and range, may be recorded on this certificate.



A. Description of original monument and accessories and/or subsequent restoration:

Original corner established by Austin Burt, U.S. Deputy Surveyor, July 12, 1847. Set Cedar Post.

ORIGINAL BEARING TREES:

18" Spruce	S33°W	7.92 feet
12" Yellow Birch	N34°E	27.06 feet

B. Description of corner evidence found and/or method applied in restoring or reestablishing corner:

No original evidence was found. Corner position falls in a county blacktop road. Extensive farming is being performed in all four directions. Corner was re-established by single proportionate measure between opposite Section Corners North and South and in the center-line of the blacktop road.

Research on file with the Ontonagon County Remonumentation Program Representative.

PEER GROUP APPROVED
Earl W. Applekamp
 COUNTY REPRESENTATIVE
 7-15-97

C. Description of monument for corner and accessories established to perpetuate locating the position of the corner:

At the corner position I set a 5/8"X12" rebar with a 3" stamped cap 1 1/2" below top of blacktop. I established a reference monument, a 2 1/2"X30" aluminum pipe with a 3" cap stamped to read: County Remonumentation, T48N R38W, R39W, R.M., 1/4, S13, S18, 1997, P.S. 17610. I established three other reference objects.

REF. MON.	S59°E	39.21'	-	Power Pole	N05°E	289.51'
Guy Pole	S70°W	32.79'	-	Power Pole	S76°E	32.13'



Signed by Earl W. Applekamp
 Surveyor's Michigan License No. 17610

Date June 18, 1997