

DEC 16 1996

COMMISSION

JUDITH D. ROEHM  
Ontonagon County  
LC 4/ 103 JEM Fee: 9.00  
Page 1 of 1

LAND CORNER RECORDATION CERTIFICATE  
Filing Requirement of Act 74, Mich. P.A. 1970

For corners in

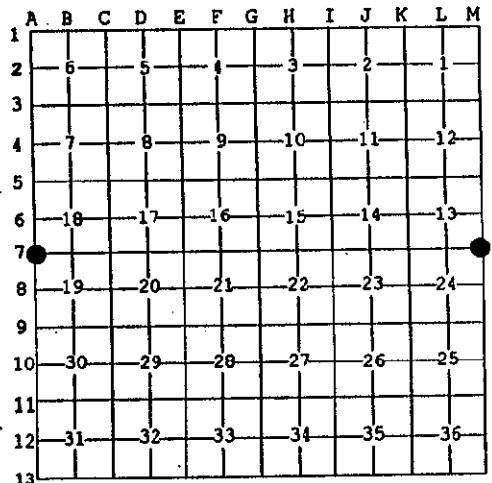
<u>ONTONAGON</u> (County)	Located In:	Corner Code #
1. Public Land Survey	T 48NR 39W	A-7 ✓
	T 48NR 40W	M-7
	T R	
	T R	
2. Property Controlling In Section	S T R	
	S T R	
3. Miscellaneous Property in Sec.	S T R	
	S T R	

Register of Deeds Stamp & File Number

4. Lot No. \_\_\_\_\_, Recorded Plat \_\_\_\_\_  
5. Private Claims \_\_\_\_\_

Section Corner common to Sections 18 & 19, T48N R39W and  
13 & 24, T48N R40W.

I, Earl W. Applekamp, in a field survey on June 21, 1996 do hereby state that under requirements of P.A. 74, Michigan P.A. of 1970, the corner points mentioned in lines 1 and 2 above were in conformance with regulations and rules therefore as required in the current manual of survey instructions of the United States Department of the Interior, Bureau of Land Management or by a decree of a Court of Law and/or that the corner points mentioned in lines 3, 4 and 5 above were in conformance with the rules of the Michigan Board of Land Surveyors or by a Decree of a Court of Law; established, re-established, monumented, recovered, found as expressed below:



NOTE: Not more than 2 corners, all in the same town and range, may be recorded on this certificate.

A. Description of original monument and accessories and/or subsequent restoration:

Original corner established by John Burt, U.S. Deputy Surveyor, July 14, 1847. Set Maple Post.

ORIGINAL BEARING TREES:

Y. Birch	9"	S47°E	16 links
Cedar	16"	N32°W	21 links

BEER GROUP APPROVED  
*Earl W. Applekamp*  
 COUNTY REPRESENTATIVE  
 07-08-96

B. Description of corner evidence found and/or method applied in restoring or reestablishing corner:

No original evidence was found. Corner was re-established using existing evidence at the site. A fence runs North-South and East from the position. An unimproved road runs East from the position for one half mile. Measurements to adjacent corners are in agreement with the original field note measurements. Corner was re-established at the intersection of the North-South fence line and the centerline of the unimproved road running East.

Research on file with the Ontonagon County Remonumentation Representative.

C. Description of monument for corner and accessories established to perpetuate locating the position of the corner:

At the corner position I set a 2 1/2" X 30" aluminum pipe with a 3 1/4" cap 2" below top of ground in the centerline of a dirt trail. Cap is stamped to read: County Remonumentation, T48N, R39W, R40W, S18, S19, S13, S24, 1996, P.S. 17610. I established four bearing trees and objects.

P. Pole	N54°-03'-28"W	14.38'	- 7" Cedar	S68°-11'-29"E	30.01'
5" Cedar	S23°-22'-57"W	12.83'	- Steel sign post	North	8.54'



Signed by Earl W. Applekamp  
 Surveyor's Michigan License No. 17610

Date June 26, 1996