

DEC 1 6 1996

COMMISSION

JUDITH D. ROEHM  
 Ontonagon County  
 LC 4/ 64 JEM Fee: 9.00  
 Page 1 of 1

**LAND CORNER RECORDATION CERTIFICATE**  
 Filing Requirement of Act 74, Mich. P.A. 1970

For corners in

<u>ONTONAGON</u> (County)	Located In:	Corner Code #
1. Public Land Survey	T48N R 39W	B-9
	T___ R___	_____
	T___ R___	_____
	T___ R___	_____
2. Property Controlling in Section	S___ T___ R___	_____
	S___ T___ R___	_____
3. Miscellaneous Property in Sec.	S___ T___ R___	_____
	S___ T___ R___	_____

Register of Deeds Stamp & File Number

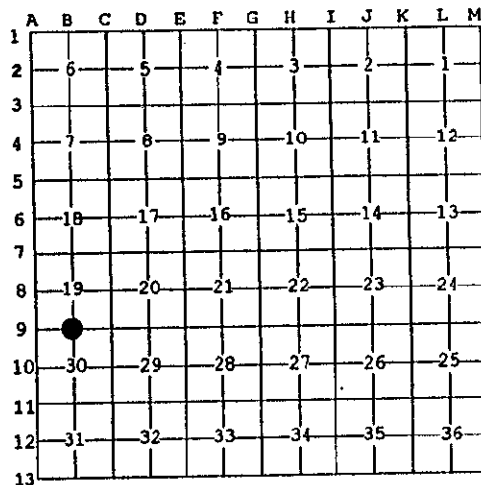
4. Lot No. \_\_\_\_\_, Recorded Plat \_\_\_\_\_

5. Private Claims \_\_\_\_\_

1/4 Corner common to S19 & S30, T48N R39W.

I, Earl W. Applekamp, in a field survey on April 21, 1996 do hereby state that under requirements of P.A. 74, Michigan P.A. of 1970, the corner points mentioned in lines 1 and 2 above were in conformance with regulations and rules therefore as required in the current manual of survey instructions of the United States Department of the Interior, Bureau of Land Management or by a decree of a Court of Law and/or that the corner points mentioned in lines 3, 4 and 5 above were in conformance with the rules of the Michigan Board of Land Surveyors or by a Decree of a Court of Law; established, re-established, monumented, recovered, found as expressed below:

NOTE: Not more than 2 corners, all in the same town and range, may be recorded on this certificate.



A. Description of original monument and accessories and/or subsequent restoration:

Original corner established by Artenas Curtis, U.S. Deputy Surveyor, September 21, 1851. Set Wood Post.

ORIGINAL BEARING TREES:

Yellow Pine 8" N50°E 18 links  
 White Pine 8" S55°W 15 links

**PEER GROUP APPROVED**  
*Earl W. Applekamp*  
 COUNTY REPRESENTATIVE  
 06-06-96

B. Description of corner evidence found and/or method applied in restoring or reestablishing corner:

No original evidence was found. Corner position falls in the centerline of Michigan Highway M-28. A blacktop road runs North from the position. Records indicate 3 small parcels of land are described from this corner and are in conformance with it. I re-established the corner by single proportionate measurement from opposite section corners East and West.

Research on file with the Ontonagon County Remonumentation Representative

C. Description of monument for corner and accessories established to perpetuate locating the position of the corner:

At the corner position I set a P.K. nail near the centerline of Highway M-28, I established two reference monuments which are 2 1/2" aluminum pipe with a 3 1/4" cap stamped to read: County Remonumentation, 1/4, R.M., T48N R39W, S19, S30, 1996, P.S. 17610. I also established two other reference objects.

REF. MON.	N30°-36'-17"E	94.35'	Guy Pole	N41°-03'-30"W	91.98'
REF. MON.	S24°-50'-59"E	108.69'	P. Pole	S53°-33'-03"W	104.73'



Signed by Earl W. Applekamp  
 Surveyor's Michigan License No. 17610

Date May 10, 1996