

DEC 16 1996

COMMISSION

JUDITH D. ROEHM  
Ontonagon County  
LC 4/ 66 JEM Fee: 9.00  
Page 1 of 1

LAND CORNER RECORDATION CERTIFICATE  
Filing Requirement of Act 74, Mich. P.A. 1970

For corners in

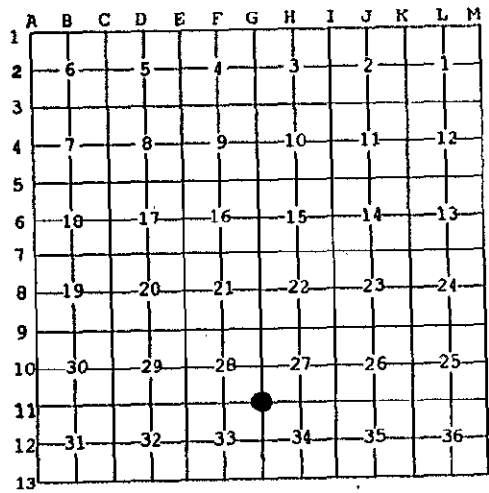
ONTONAGON (County)	Located In:	Corner Code #
1. Public Land Survey	T48N R 39W	G-11
	T___ R___	_____
	T___ R___	_____
	T___ R___	_____
2. Property Controlling in Section	S___ T___ R___	_____
	S___ T___ R___	_____
3. Miscellaneous Property in Sec.	S___ T___ R___	_____
	S___ T___ R___	_____

Register of Deeds Stamp & File Number

4. Lot No. \_\_\_\_\_, Recorded Plat \_\_\_\_\_  
5. Private Claims \_\_\_\_\_

Section Corner common to Sections 27, 28, 33, & 34,  
T48N R39W.  
I, Earl W. Applekamp, in a field survey on May 06, 1996 do hereby state that under requirements of P.A. 74, Michigan P.A. of 1970, the corner points mentioned in lines 1 and 2 above were in conformance with regulations and rules therefore as required in the current manual of survey instructions of the United States Department of the Interior, Bureau of Land Management or by a decree of a Court of Law and/or that the corner points mentioned in lines 3, 4 and 5 above were in conformance with the rules of the Michigan Board of Land Surveyors or by a Decree of a Court of Law; established, re-established, monumented, recovered, found as expressed below:

NOTE: Not more than 2 corners, all in the same town and range, may be recorded on this certificate.

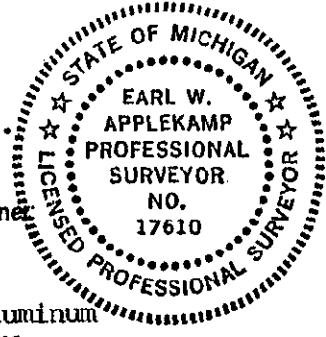


A. Description of original monument and accessories and/or subsequent restoration:  
Original corner established by Artemas Curtis, U.S. Deputy Surveyor, September 16, 1851. Set Wood Post.

ORIGINAL BEARING TREES:  
Spruce 12" N30°E 41 links  
Fir 14" S60°W 37 links

PEER GROUP APPROVED  
Earl W. Applekamp  
COUNTY REPRESENTATIVE  
06-06-96

B. Description of corner evidence found and/or method applied in restoring or reestablishing corner:  
No original evidence was found except the 3 stream calls. At the corner position there is a 3/4" Iron Pin in a monument box 3 feet East of the centerline of Highway U.S.-45. The 3 stream calls agree with this position. I accepted the position and monumented the corner as described below.



Research on file with the County Remonumentation Program Representative.

C. Description of monument for corner and accessories established to perpetuate locating the position of the corner:  
At the corner position I left the 3/4" Iron Pin in the monument box in Highway U.S.-45. I established 2 reference monuments, which are 2 1/2" aluminum pipe with a 3 1/4" cap stamped to read: County Remonumentation, R.M., T48N-R39W, S27, S28, S33, S34, 1996, P.S. 17610. I also established two other reference objects.

REF. MON.	N70°-10'-35"W	131.07'	Guy Pole	S67°-57'-44"W	115.66'
REF. MON.	N59°-49'-30"E	92.03'	P. Pole	S47°-59'-53"W	65.42'

Signed by Earl W. Applekamp  
Surveyor's Michigan License No. 17610

Date May 10, 1996