

LAND CORNER RECORDATION CERTIFICATE
 Filing Requirement of Act 74, Mich. P.A. 1970

For corners in

ONTONAGON (County)	Located In:	Corner Code #
1. Public Land Survey	T48NR 39W	H-3
	T ___ R ___	_____
	T ___ R ___	_____
	T ___ R ___	_____
2. Property Controlling in Section	S ___ T ___ R ___	_____
	S ___ T ___ R ___	_____
3. Miscellaneous Property in Sec.	S ___ T ___ R ___	_____
	S ___ T ___ R ___	_____

SURVEY &
 REMONUMENTATION

OCT 30 1997

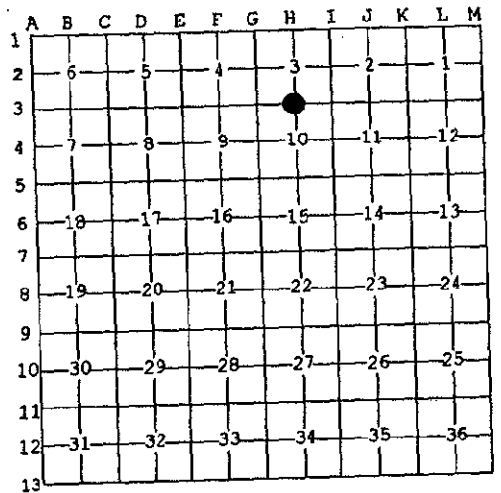
COMMISSION
 Register of Deeds Stamp & File Number

4. Lot No. _____, Recorded Plat _____
 5. Private Claims _____

1/4 Corner common to Sections 3 & 10, T48N R39W.

I, Earl W. Applekamp, in a field survey on May 30, 1997 do hereby state that under requirements of P.A. 74, Michigan P.A. of 1970, the corner points mentioned in lines 1 and 2 above were in conformance with regulations and rules therefore as required in the current manual of survey instructions of the United States Department of the Interior, Bureau of Land Management or by a decree of a Court of Law and/or that the corner points mentioned in lines 3, 4 and 5 above were in conformance with the rules of the Michigan Board of Land Surveyors or by a Decree of a Court of Law; established, re-established, monumented, recovered, found as expressed below:

NOTE: Not more than 2 corners, all in the same town and range, may be recorded on this certificate.



A. Description of original monument and accessories and/or subsequent restoration:

Original corner established by Artemas Curtis, U.S. Deputy Surveyor, September 1851. Set Wood Post.

ORIGINAL BEARING TREES:

6" W. Pine N73°E 9.24 feet
 10" Spruce S85°W 21.12 feet

B. Description of corner evidence found and/or method applied in restoring or reestablishing corner:

No original evidence was found. MDOT Highway map indicates corner at 2643.26 feet East of SW Corner Section 10. No evidence could be found. I re-established the corner at the intersection of a well maintained fence running South and a field-woods line running North and the centerline of the county road running East and West. This position is within 2.64 feet of a split.

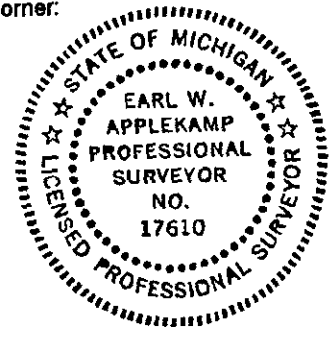
Research on file with the Ontonagon County Remonumentation Program Representative.

PEER GROUP APPROVED
Earl W. Applekamp
 COURT REPRESENTATIVE
 8-13-97

C. Description of monument for corner and accessories established to perpetuate locating the position of the corner:

At the corner position I set a 5/8"x12" rebar with a 3" stamped aluminum cap 2" below top of blacktop and in the centerline of the county road. I established a reference monument, a 2 1/2"x30" aluminum pipe with a 3" cap stamped to read: County Remonumentation, T48N R39W, R.M., 1/4, S3, S10, 1997, P.S. 17610. I established 2 bearing trees and one other reference object.

REF. MON. South 38.29 feet - 4" W. Pine N33°E 58.86 feet
 Steel Sign Post South 39.29' - 18" W. Pine N64°E 94.98 feet



Signed by Earl W. Applekamp
 Surveyor's Michigan License No. 17610

Date July 28, 1997