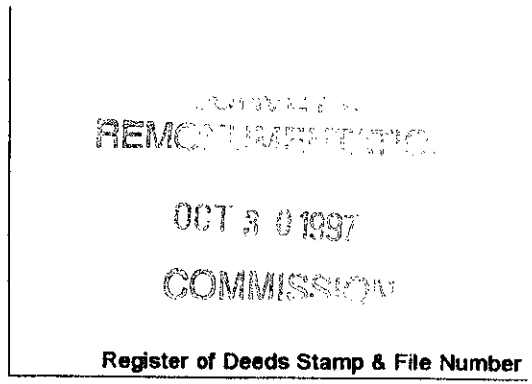


LAND CORNER RECORDATION CERTIFICATE
 Filing Requirement of Act 74, Mich. P.A. 1970

For corners in

ONTONAGON (County)	Located In:	Corner Code #
1. Public Land Survey	T48N R39W	I-11
	T___ R___	_____
	T___ R___	_____
	T___ R___	_____
2. Property Controlling in Section	S___ T___ R___	_____
	S___ T___ R___	_____
3. Miscellaneous Property in Sec.	S___ T___ R___	_____
	S___ T___ R___	_____

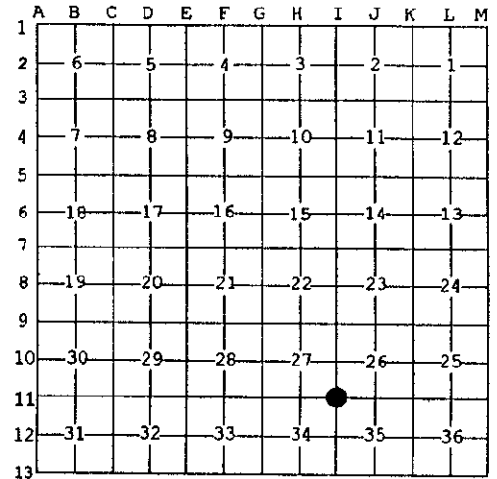


4. Lot No. _____, Recorded Plat _____
 5. Private Claims _____

Section Corner common to Sections 26, 27, 34 & 35, T48N R39W.

I, Earl W. Applekamp, in a field survey on June 21, 1997 do hereby state that under requirements of P.A. 74, Michigan P.A. of 1970, the corner points mentioned in lines 1 and 2 above were in conformance with regulations and rules therefore as required in the current manual of survey instructions of the United States Department of the Interior, Bureau of Land Management or by a decree of a Court of Law and /or that the corner points mentioned in lines 3, 4 and 5 above were in conformance with the rules of the Michigan Board of Land Surveyors or by a Decree of a Court of Law; established, re-established, monumented, recovered, found as expressed below:

NOTE: Not more than 2 corners, all in the same town and range, may be recorded on this certificate.



A. Description of original monument and accessories and/or subsequent restoration:

Original corner established by Artemas Curtis, U.S. Deputy Surveyor, September 1851. Set Wood Post.

ORIGINAL BEARING TREES:

- 12" Hemlock N46°W 23.10 feet
- 14" Lynn S55°E 18.48 feet

B. Description of corner evidence found and/or method applied in restoring or reestablishing corner:

No original evidence was found. Corner position is at the intersection of a blacktop road running North and a gravel road running East. A dirt road runs West & South. The intersection of these roads is the only logical position for the corner. Distances to established corners 1 mile West and 2 miles East are consistently shorter than G.L.O. distances. Distance to an established corner 1 mile North is also proportionately shorter than G.L.O. note. Corner was re-established at the intersection of the four roads.

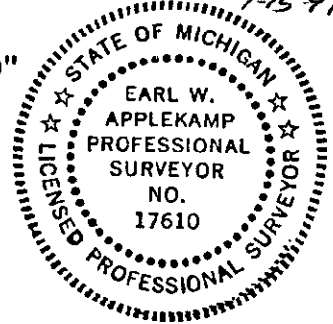
Research on file with the Ontonagon County Remonumentation Program Representative.

PEER GROUP APPROVED
Earl W. Applekamp
 COUNTY REPRESENTATIVE
 7-15-97

C. Description of monument for corner and accessories established to perpetuate locating the position of the corner:

At the corner position I set a 5/8"x12" rebar with a 3" stamped cap 6" below top of gravel road. I established a reference monument, a 2 1/2"x30" aluminum pipe with a 3" cap stamped to read: County Remonumentation, T48N R39W, R.M., S26, S27, S34, S35, 1997, P.S. 17610. I also established three other reference objects.

- REF. MON. N51°E 51.60' - Power Pole S64°W 103.00'
- Power Pole S74°E 164.95' - 8" Hard Maple N51°W 47.78'



Signed by Earl W. Applekamp
 Surveyor's Michigan License No. 17610

Date June 25, 1997