

**LAND CORNER RECORDATION CERTIFICATE**  
 Filing Requirement of Act 74, Mich. P.A. 1970

For corners in

<u>ONTONAGON</u> (County)	Located In:	Corner Code #
1. Public Land Survey	T <u>48N</u> R <u>39W</u>	<u>K-4</u>
	T___ R___	_____
	T___ R___	_____
	T___ R___	_____
2. Property Controlling in Section	S___ T___ R___	_____
	S___ T___ R___	_____
3. Miscellaneous Property in Sec.	S___ T___ R___	_____
	S___ T___ R___	_____

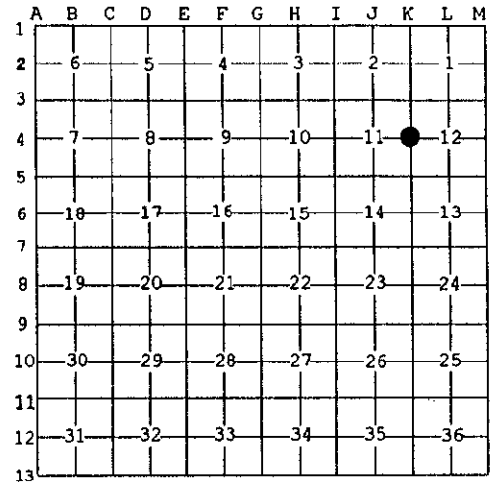
REMONUMENTATION  
 OCT 8 0 1997  
 COMMISSION  
 Register of Deeds Stamp & File Number

4. Lot No. \_\_\_\_\_, Recorded Plat \_\_\_\_\_  
 5. Private Claims \_\_\_\_\_

$\frac{1}{4}$  Corner common to Sections 11 & 12, T48N R39W.

I, Earl W. Applekamp, in a field survey on June 28, 1997 do hereby state that under requirements of P.A. 74, Michigan P.A. of 1970, the corner points mentioned in lines 1 and 2 above were in conformance with regulations and rules therefore as required in the current manual of survey instructions of the United States Department of the Interior, Bureau of Land Management or by a decree of a Court of Law and /or that the corner points mentioned in lines 3, 4 and 5 above were in conformance with the rules of the Michigan Board of Land Surveyors or by a Decree of a Court of Law; established, re-established, monumented, recovered, found as expressed below:

NOTE: Not more than 2 corners, all in the same town and range, may be recorded on this certificate.



A. Description of original monument and accessories and/or subsequent restoration:

Original corner established by Artemas Curtis, U.S. Deputy Surveyor, September 22, 1851. Set Wood Post.

ORIGINAL BEARING TREES:

8" White ash N45°W 19.80 feet  
 6" White Ash S70°E 7.26 feet

B. Description of corner evidence found and/or method applied in restoring or reestablishing corner:

No original evidence was found. At the apparent corner position there is a gravel road running North & South. This road turns to a dirt road at Quarter corner and continues North. There is a woods & field line on the West and a wood & old field line East. I re-established the corner by single proportionate measure and in the centerline of the gravel road.

Research on file with the Ontonagon County Remonumentation Program Representative.

PEER GROUP APPROVED  
*Earl W. Applekamp*  
 COUNTY REPRESENTATIVE  
 7-15-97

C. Description of monument for corner and accessories established to perpetuate locating the position of the corner:

At the corner position I set a 5/8"X12" rebar with a stamped cap 6" below top of gravel road. I established a reference monument, a 2 1/2"X30" aluminum pipe with a 3" cap stamped to read: County Remonumentation, T48N R39W, R.M.,  $\frac{1}{4}$ , S11, S12, 1997, P.S. 17610. I also established 3 bearing trees.

REF. MON. N62°W 37.85' - 4" Ash S67°E 55.02'  
 6" Ash N50°E 56.83' - 20" Basswood S21°W 90.80'



Signed by Earl W. Applekamp  
 Surveyor's Michigan License No. 17610

Date July 7, 1997