

SURVEY & REMONUMENTATION

APR 29 1996

COMMISSION

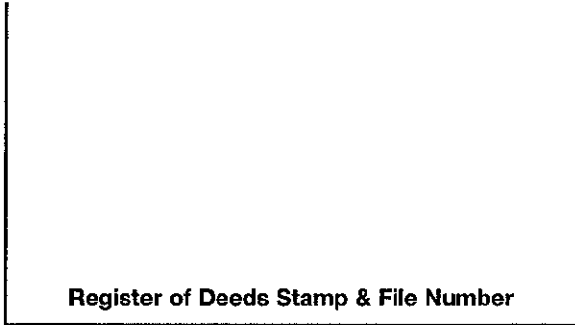
JUDITH D. ROEHM
 Ontonagon County
 LC 3/306 JEM Fee: 9.00
 09/22/95
 08:14
 Page 1 of 1

LAND CORNER RECORDATION CERTIFICATE
 Filing Requirement of Act 74, Mich. P.A. 1970

For corners in ONTONAGON Located in: _____ Corner Code # _____
 (County)

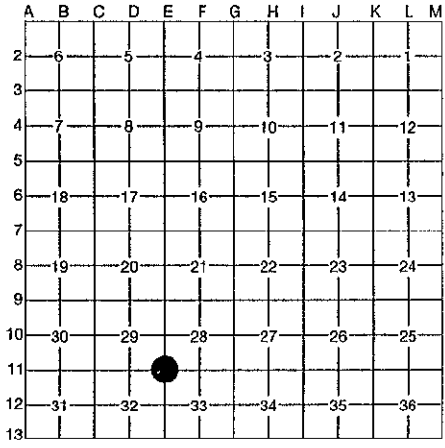
1. Public Land Survey	T	<u>48</u>	R	<u>40</u>	<u>E-11</u>
	T	_____	R	_____	_____
	T	_____	R	_____	_____
	T	_____	R	_____	_____
2. Property Controlling in Section	S	_____	T	_____	R
	S	_____	T	_____	R
3. Miscellaneous Property in Section	S	_____	T	_____	R
	S	_____	T	_____	R

4. Lot No. _____, Recorded Plat _____
 5. Private Claims _____



Section Corner common to Sections 28, 29, 32, 33, T48N R40W.

I, Earl W. Applekamp, in a field survey on August 03, 1995, do hereby certify that under requirements of P.A. 74, Michigan P.A. of 1970, the corner points mentioned in lines 1 and 2 above were in conformance with regulations and rules therefore as required in the current manual of survey instructions of the United States Department of the Interior, Bureau of Land Management or by a decree of a Court of Law and/or that the corner points mentioned in lines 3, 4 and 5 above were in conformance with the rules of the Michigan Board of Professional Surveyors or by a Decree of a Court of Law; established, re-established, monumented, re-monumented, recovered, found as expressed below:



NOTE: Not more than 4 corners, all in the same town and range, may be recorded on this certificate.

A. Description of original monument and accessories and/or subsequent restoration:

Original corner established by Wills Burt, U.S. Deputy Surveyor, June 1857. Set Post.

BEARING TREES:

- Hemlock 12" S68°W 8 links (5.28 feet)
- Hemlock 14" N80°E 15 links (9.90 feet)

B. Description of corner evidence found and/or method applied in restoring or reestablishing corner:

No original evidence was found. At the corner position I found a 1 1/4" pipe 6" below and in the centerline of a gravel road. An existing maintained fence ran East and West from this location. The 1 1/4" pipe was used for a survey by E.W. Applekamp, September 1984. The East line of Section 32 was measured, using this corner and the SE Corner. The total distance was 5266.84 feet. I accepted the pipe as being the corner and monumented the corner as described in "C" below.



C. Description of monument for corner and accessories established to perpetuate locating the position of the corner:

At the corner position I set a 3/4" rebar with a 3 1/4" aluminum cap, 4" below the gravel surface. Cap is stamped to read: COUNTY REMONUMENTATION, T48N R40W, S29, S28, S32, S33, 1995, P.S. 17610. I established the following bearing trees, objects and witness corner.

- 5" Aspen S64°W 48.09 feet - 2 1/2"x30" Aluminum pipe W.C. West 28.54 feet
- REA Power Pole S10°E 202.68 feet - Steel Sign Post West 29.52 feet
- REA Power Pole N13°E 103.34 feet

PEER GROUP APPROVED
Earl W. Applekamp 9-20-95
 COUNTY REPRESENTATIVE

Signed by Earl W. Applekamp Date September 20, 1995

Surveyor's Michigan License No. 17610

302