

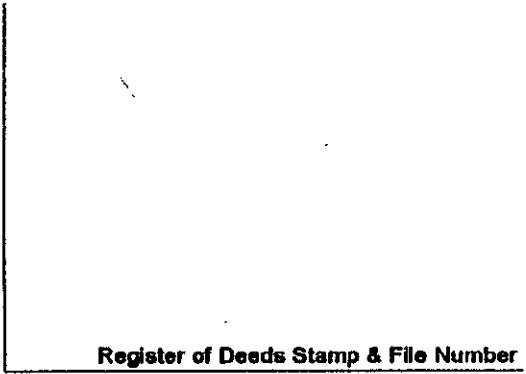
DEC 18 1996

JUDITH D. ROEHM  
 Ontonagon County  
 LC 4/ 86 JEM Fee: 9.00  
 07/11/96  
 08:40  
 Page 1 of 1

**COMMISSION LAND CORNER RECORDATION CERTIFICATE**  
 Filing Requirement of Act 74, Mich. P.A. 1970

For corners in

<u>ONTONAGON</u> (County)	Located In:	Corner Code #
1. Public Land Survey	T48N R 40W	F-7
	T___ R___	_____
	T___ R___	_____
	T___ R___	_____
2. Property Controlling in Section	S___ T___ R___	_____
	S___ T___ R___	_____
3. Miscellaneous Property in Sec.	S___ T___ R___	_____
	S___ T___ R___	_____

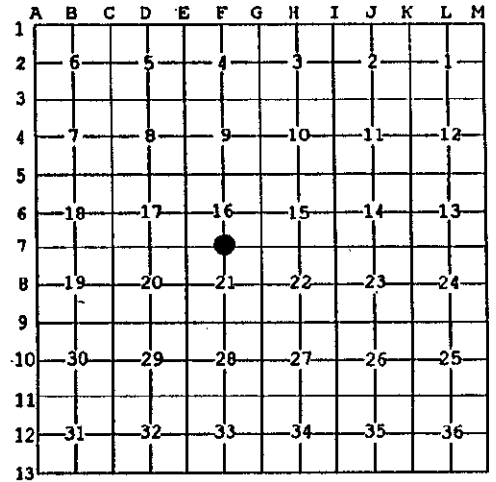


4. Lot No. \_\_\_\_\_, Recorded Plat \_\_\_\_\_  
 5. Private Claims \_\_\_\_\_

1/4 Corner common to Sections 16 & 21, T48N R40W.

I, Earl W. Applekamp, in a field survey on June 20, 1996 do hereby state that under requirements of P.A. 74, Michigan P.A. of 1970, the corner points mentioned in lines 1 and 2 above were in conformance with regulations and rules therefore as required in the current manual of survey instructions of the United States Department of the Interior, Bureau of Land Management or by a decree of a Court of Law and /or that the corner points mentioned in lines 3, 4 and 5 above were in conformance with the rules of the Michigan Board of Land Surveyors or by a Decree of a Court of Law; established, re-established, monumented, recovered, found as expressed below:

NOTE: Not more than 2 corners, all in the same town and range, may be recorded on this certificate.



**A. Description of original monument and accessories and/or subsequent restoration:**

Original corner established by Wells Burt, U.S. Deputy Surveyor, May 26, 1851. Set Wood Post.

**ORIGINAL BEARING TREES:**

W. Pine 36" S60°E 11 links  
 Y. Birch 10" N20°W 27 links

**PEER GROUP APPROVED**  
*Earl W. Applekamp*  
 COUNTY REPRESENTATIVE  
 07-08-96

**B. Description of corner evidence found and/or method applied in restoring or reestablishing corner:**

No original evidence was found. Corner was re-established at the intersection of 3 fence lines running North-South and East from the corner. The area NW & SW from the corner is being farmed and is all field. The position of the re-established corner is in harmony with the original field note calls. Corner position is also in harmony with occupation lines.

Research on file with the Ontonagon County Remonumentation Program Representative.

**C. Description of monument for corner and accessories established to perpetuate locating the position of the corner:**

At the corner position I set a 2 1/2" x 30" aluminum pipe with a 3 1/4" cap stamped to read: County Remonumentation, 1/4, T48N R40W, S16, S21, 1996, P.S. 17610. I also established three bearing trees and one reference object.

5" Aspen S06°-29'-42"E 203.57' - 7" Aspen N09°-01'-46"E 61.74'  
 8" Aspen N40°-27'-44"E 18.39' - Steel Sign Post East 1.35'



Signed by Earl W. Applekamp  
 Surveyor's Michigan License No. 17610

Date June 27, 1996