

DEC 16 1996

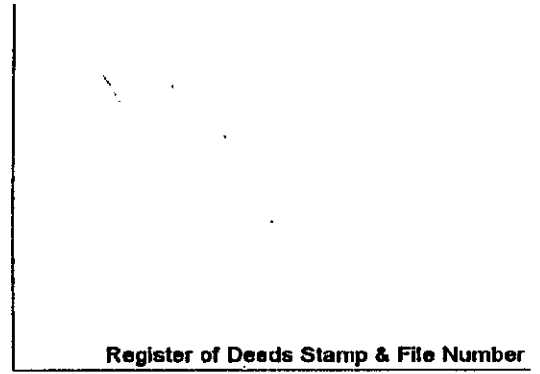
COMMISSION

JUDITH D. ROEHM
 Ontonagon County
 LC 4/67 JEM Feet 9.00
 06/10/96 15:37
 Page 1 of 1

LAND CORNER RECORDATION CERTIFICATE
 Filing Requirement of Act 74, Mich. P.A. 1970

For corners in

<u>ONTONAGON</u> (County)	Located In:	Corner Code #
1. Public Land Survey	T <u>48NR 40W</u>	<u>F-9</u>
	T ___ R ___	_____
	T ___ R ___	_____
	T ___ R ___	_____
2. Property Controlling In Section	S ___ T ___ R ___	_____
	S ___ T ___ R ___	_____
3. Miscellaneous Property in Sec.	S ___ T ___ R ___	_____
	S ___ T ___ R ___	_____

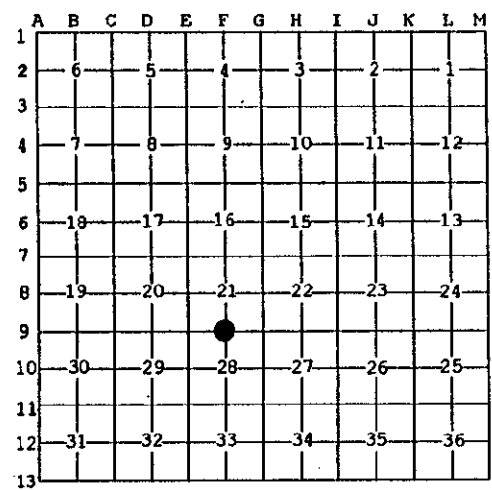


4. Lot No. _____, Recorded Plat _____
 5. Private Claims _____

1/4 Corner common to Sections 21 & 28, T48N R40W.

I, Earl W. Applekamp, in a field survey on May 15, 1996 do hereby state that under requirements of P.A. 74, Michigan P.A. of 1970, the corner points mentioned in lines 1 and 2 above were in conformance with regulations and rules therefore as required in the current manual of survey instructions of the United States Department of the Interior, Bureau of Land Management or by a decree of a Court of Law and for that the corner points mentioned in lines 3, 4 and 5 above were in conformance with the rules of the Michigan Board of Land Surveyors or by a Decree of a Court of Law; established, re-established, monumented, recovered, found as expressed below:

NOTE: Not more than 2 corners, all in the same town and range, may be recorded on this certificate.



A. Description of original monument and accessories and/or subsequent restoration:

Original corner established by Wells Burt, U.S. Deputy Surveyor, June 3, 1851. Set Wood Post.

ORIGINAL BEARING TREES:

Maple	8"	N58°E	6 links
Sugar	18"	N54°W	26 links

Earl W. Applekamp
 COUNTY _____
 06-06-96

B. Description of corner evidence found and/or method applied in restoring or reestablishing corner:

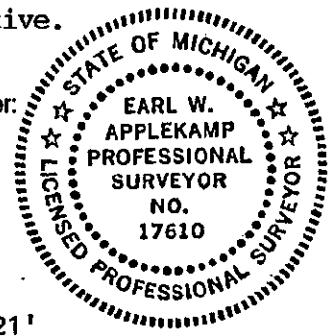
At the corner position I found a 1/2" iron pin, 6" below the blacktop. This pin was used for the P.O.B. of a 1.02 acre parcel of land to sell the buildings from a farm. The corner position is in conformance with an enter swamp call West. The area has been farmed for years on all sides of the corner and still is. The corner will be monumented at the 1/2" iron pin.

Research is on file with the Ontonagon County Remonumentation Representative.

C. Description of monument for corner and accessories established to perpetuate locating the position of the corner:

At the corner position I set a 5/8"x24" Rebar with a 3 1/4" stamped cap 2" below top of blacktop. I established one reference monument, a 2 1/2"x30" aluminum pipe with a 3 1/4" cap stamped to read, County Remonumentation, 1/4, T48N R40W, S21, S28, 1996, P.S. 17610. I also established two other reference objects.

REF. MON.	N01°-48'-09"W	32.66'	- REA P. Pole	S76°-39'-09"E	142.21'
P. Pole	S77°-17'-29"W	152.23'	- Steel Sign Post North		33.76



Signed by Earl W. Applekamp
 Surveyor's Michigan License No. 17610

Date June 3, 1996