

DEC 16 1996

JUDITH D. ROEHM
 Ontonagon County
 LC 4/ 89 JEM Fee: 9.00
 Page 1 of 1

COMMISSION LAND CORNER RECORDATION CERTIFICATE
 Filing Requirement of Act 74, Mich. P.A. 1970

For corners in

<u>ONTONAGON</u> (County)	Located In:	Corner Code #
1. Public Land Survey	T48N R40W	G-7
	T___ R___	_____
	T___ R___	_____
	T___ R___	_____
2. Property Controlling in Section	S___ T___ R___	_____
	S___ T___ R___	_____
3. Miscellaneous Property in Sec.	S___ T___ R___	_____
	S___ T___ R___	_____

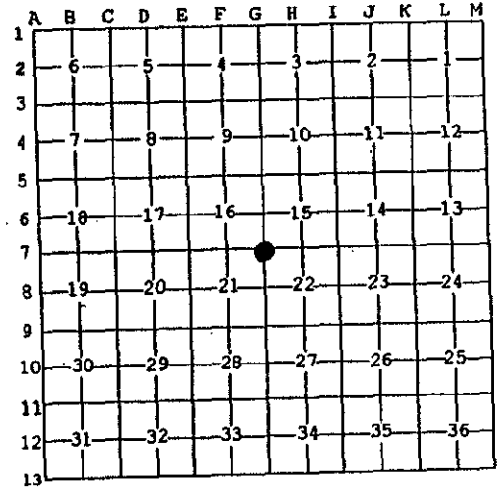
Register of Deeds Stamp & File Number

4. Lot No. _____, Recorded Plat _____
 5. Private Claims _____

Section Corner common to 15, 16, 21 & 22, T48N R40W.

I, Earl W. Applekamp, in a field survey on June 12, 1996 do hereby state that under requirements of P.A. 74, Michigan P.A. of 1970, the corner points mentioned in lines 1 and 2 above were in conformance with regulations and rules therefore as required in the current manual of survey instructions of the United States Department of the Interior, Bureau of Land Management or by a decree of a Court of Law and /or that the corner points mentioned in lines 3, 4 and 5 above were in conformance with the rules of the Michigan Board of Land Surveyors or by a Decree of a Court of Law; established, re-established, monumented, recovered, found as expressed below:

NOTE: Not more than 2 corners, all in the same town and range, may be recorded on this certificate.



A. Description of original monument and accessories and/or subsequent restoration:

Original corner established by Wells Burt, U.S. Deputy Surveyor, May 26, 1851. Set Wood Post.

ORIGINAL BEARING TREES:

Y. Birch 14" S07°E 23 links
 Fir 12" N37°W 14 links

B. Description of corner evidence found and/or method applied in restoring or reestablishing corner:

No original evidence was found. Corner was re-established by accepting a fence running North and South from the corner position for the departure and a stream call South for the latitude. This position is in harmony with the occupied land in four directions.

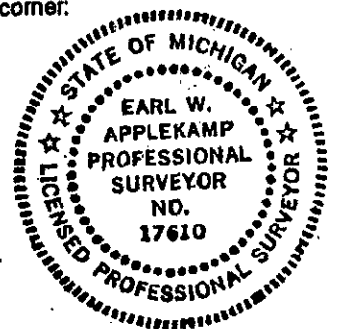
Research on file with the Ontonagon County Remonumentation Program Representative.

PEER GROUP APPROVED
Earl W. Applekamp
 COUNTY REPRESENTATIVE
 07-08-96

C. Description of monument for corner and accessories established to perpetuate locating the position of the corner:

At the corner position I set a 2½"x30" aluminum pipe with a ¾" cap stamped to read: County Remonumentation, S15, S16, S21, S22, 1996, P.S. 17610. I established five bearing trees and reference objects.

Centerline gas pipeline clearing North 110.5 feet.
 5" Maple N71°-01'-57"W 18.65' - 8" Maple S39°-19'-08"E 17.92'
 7" W. Birch N58°-48'-05"E 18.81' - Steel Sign Post West 0.96'



Signed by Earl W. Applekamp
 Surveyor's Michigan License No. 17610

Date June 27, 1996