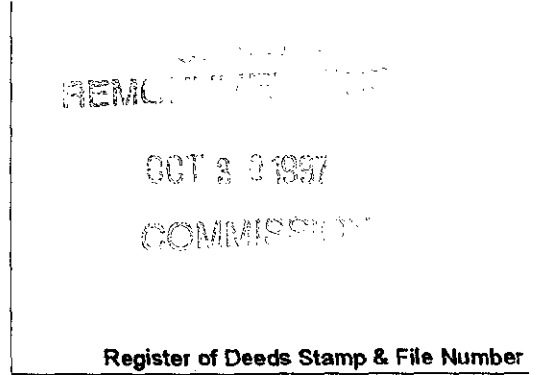


LAND CORNER RECORDATION CERTIFICATE  
 Filing Requirement of Act 74, Mich. P.A. 1970

For corners in

ONTONAGON (County)	Located In:	Corner Code #
1. Public Land Survey	T48N R 41W	E-7
	T R	
	T R	
	T R	
2. Property Controlling in Section	S T R	
	S T R	
3. Miscellaneous Property in Sec.	S T R	
	S T R	

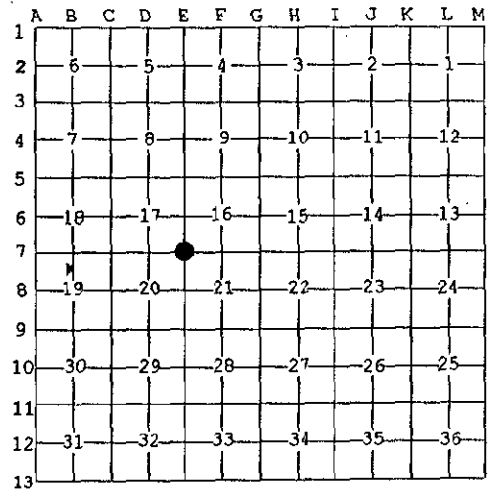


4. Lot No. \_\_\_\_\_, Recorded Plat \_\_\_\_\_  
 5. Private Claims \_\_\_\_\_

Section Corner common to Sections 16, 17, 20 & 21, T48N R41W.

I, Earl W. Applekamp, in a field survey on Aug. 22, 1997 do hereby state that under requirements of P.A. 74, Michigan P.A. of 1970, the corner points mentioned in lines 1 and 2 above were in conformance with regulations and rules therefore as required in the current manual of survey instructions of the United States Department of the Interior, Bureau of Land Management or by a decree of a Court of Law and/or that the corner points mentioned in lines 3, 4 and 5 above were in conformance with the rules of the Michigan Board of Land Surveyors or by a Decree of a Court of Law; established, re-established, monumented, recovered, found as expressed below:

NOTE: Not more than 2 corners, all in the same town and range, may be recorded on this certificate.



A. Description of original monument and accessories and/or subsequent restoration:

Original corner established by Wells Burt, U.S. Deputy Surveyor, June 10, 1851. Set Wood Post.

ORIGINAL BEARING TREES:

- 16" Cedar S74°E 5.28 feet
- 10" Cedar N86°W 11.22 feet

B. Description of corner evidence found and/or method applied in restoring or reestablishing corner:

No original evidence was found. Area has been extensively logged several times and burned over in the early 1900's. This area had not been farmed or pastured so no fences are present. Corner was re-established by double proportionate measurement from established section corners in four directions.

Research on file with the Ontonagon County Remonumentation Program Representative.

**PEER GROUP APPROVED**  
*Earl W. Applekamp*  
 COUNTY REPRESENTATIVE  
 9-17-97

C. Description of monument for corner and accessories established to perpetuate locating the position of the corner:

At the corner position I set a 2 1/2"x30" split base aluminum monument with a 3" cap stamped to read: County Remonumentation, T48N R41W, S16, S17, S20, S21, 1997, P.S. 17610. I established 3 bearing trees and a reference object.

- 6" Maple N77°W 36.67' - 8" Maple N68°E 30.33'
- 6" Maple N03°E 40.00' - Steel Sign Post, South 0.90'



Signed by Earl W. Applekamp  
 Surveyor's Michigan License No. 17610

Date September 16, 1997