

LAND CORNER RECORDATION CERTIFICATE  
 Filing Requirement of Act 74, Mich. P.A. 1970

For corners in

<u>ONTONAGON</u> (County)	Located In:	Corner Code #
1. Public Land Survey	<u>T48N R41W</u>	<u>T-5</u>
	T___ R___	_____
	T___ R___	_____
	T___ R___	_____
2. Property Controlling in Section	S___ T___ R___	_____
	S___ T___ R___	_____
3. Miscellaneous Property in Sec.	S___ T___ R___	_____
	S___ T___ R___	_____

SURVEY &  
 REMONUMENTATION

APR 07 1998

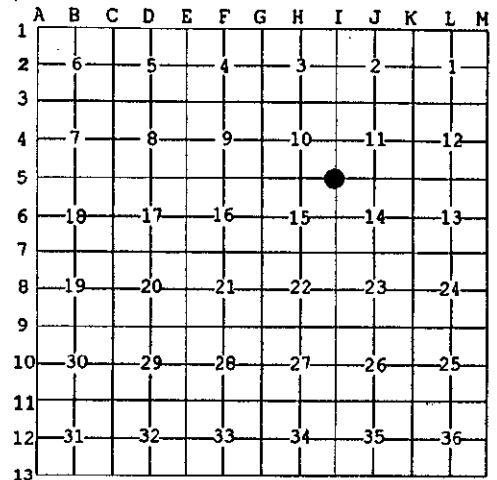
SECTION

Register of Deeds Stamp & File Number

4. Lot No. \_\_\_\_\_, Recorded Plat \_\_\_\_\_  
 5. Private Claims \_\_\_\_\_

Section Corner common to Sections 10, 11, 14 & 15, T48N R41W.

I, Earl W. Applekamp, in a field survey on Oct. 01, 1997 do hereby state that under requirements of P.A. 74, Michigan P.A. of 1970, the corner points mentioned in lines 1 and 2 above were in conformance with regulations and rules therefore as required in the current manual of survey instructions of the United States Department of the Interior, Bureau of Land Management or by a decree of a Court of Law and/or that the corner points mentioned in lines 3, 4 and 5 above were in conformance with the rules of the Michigan Board of Land Surveyors or by a Decree of a Court of Law; established, re-established, monumented, recovered, found as expressed below:



NOTE: Not more than 2 corners, all in the same town and range, may be recorded on this certificate.

A. Description of original monument and accessories and/or subsequent restoration:

Original corner established by Wells Burt, U.S. Deputy Surveyor, June 17, 1851. Set Wood Post.

ORIGINAL BEARING TREES:

18" Cedar N16°W 3.96 feet  
 18" Cedar S75°W 6.60 feet

PEER GROUP APPROVAL  
*Earl W. Applekamp*  
 COUNTY REPRESENTATIVE 10-08-97

B. Description of corner evidence found and/or method applied in restoring or reestablishing corner:

No original evidence was found. MDOT highway drawings from 1963 identify the corner being 2071 feet North of highway center-line and marked it with squared pine post. Northern Natural Gas Co. surveyed the gas line route in 1996 and called the corner 57 feet North of the survey line. They did not indicate what was at the corner. I found a 1" pipe at the position identified by the two surveys. No record was found as to where the pipe came from. I re-established the corner at the pipe location.

Research on file with the Ontonagon County Remonumentation Program Representative.

C. Description of monument for corner and accessories established to perpetuate locating the position of the corner:

At the corner position I set a 2 1/2" X 30" aluminum pipe with a 3" cap stamped to read: County Remonumentation, T48N R41W, S10, S11, S14, S15, 1997, P.S. 17610. I established three bearing trees and a reference object. Corner position is 52 feet North of the center-line of the gas line clearing.

4" Maple N34°W 23.82 feet - 8" Maple S56°E 46.88 feet  
 7" Maple N63°E 23.57 feet - Steel Sign Post, South 1.24 feet



Signed by Earl W. Applekamp  
 Surveyor's Michigan License No. 17610

Date October 2, 1997