

DEC 1 6 1996

COMMISSION

JUDITH D. ROEHM
 Ontonagon County
 LC 4/ 74 JEM Fee: 9.00
 06/10/96 15:43
 Page 1 of 1

LAND CORNER RECORDATION CERTIFICATE
 Filing Requirement of Act 74, Mich. P.A. 1970

For corners in

<u>ONTONAGON</u> (County)	Located In:	Corner Code #
1. Public Land Survey	T <u>48N</u> R <u>42W</u>	E-5
	T ___ R ___	_____
	T ___ R ___	_____
	T ___ R ___	_____
2. Property Controlling In Section	S ___ T ___ R ___	_____
	S ___ T ___ R ___	_____
3. Miscellaneous Property in Sec.	S ___ T ___ R ___	_____
	S ___ T ___ R ___	_____

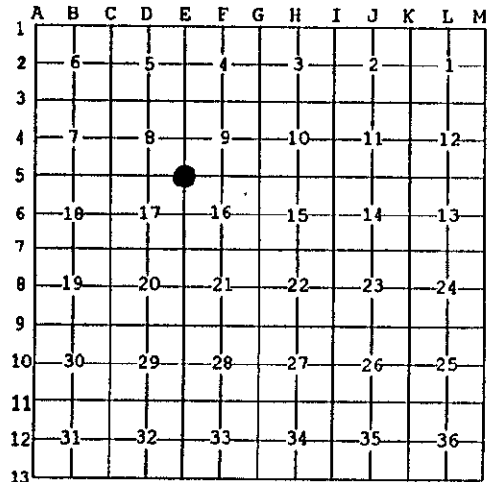
Register of Deeds Stamp & File Number

4. Lot No. _____, Recorded Plat _____
 5. Private Claims _____

Section Corner common to Sections 8, 9, 16 & 17, T48N R42W.

I, Earl W. Applekamp, in a field survey on May 21, 1996 do hereby state that under requirements of P.A. 74, Michigan P.A. of 1970, the corner points mentioned in lines 1 and 2 above were in conformance with regulations and rules therefore as required in the current manual of survey instructions of the United States Department of the Interior, Bureau of Land Management or by a decree of a Court of Law and /or that the corner points mentioned in lines 3, 4 and 5 above were in conformance with the rules of the Michigan Board of Land Surveyors or by a Decree of a Court of Law; established, re-established, monumented, recovered, found as expressed below:

NOTE: Not more than 2 corners, all in the same town and range, may be recorded on this certificate.



A. Description of original monument and accessories and/or subsequent restoration:

Original corner established by Austin Burt, U.S. Deputy Surveyor, August 08, 1848. Set Tamarack Post.

ORIGINAL BEARING TREES:

Spruce 12" N28°E 35 links
 Spruce 10" N31°W 32 links

PEER GROUP APPROVED

Earl W. Applekamp
 COUNTY REPRESENTATIVE

6-06-96

B. Description of corner evidence found and/or method applied in restoring or reestablishing corner:

No original evidence was found. At the corner position there were yellow tags, old (50 years) and new. Trees blazed pointing to the ultimate corner position. Paint lines run in all four directions. Corner was re-established by running a line from the SW Corner of Section 8, parallel to the South line of Government Lot 1 and 2 for latitude and evidence at the site for the departure.

Research on file with the Ontonagon County Remonumentation Representative.

C. Description of monument for corner and accessories established to perpetuate locating the position of the corner:

At the corner position I set a 3/4"x48" aluminum rod with a 3 1/4" cap stamped to read: County Remonumentation, T48N R42W, S8, S9, S16, S17, 1996, P.S. 17610. I established three bearing trees and one reference object.

5" Cedar S32°W 16.63' - 5" Cedar S28°E 12.74'
 16" Hemlock N64°W 5.77' - Steel Sign Post East 1.21'



Signed by Earl W. Applekamp
 Surveyor's Michigan License No. 17610

Date June 06, 1996