

# SURVEY & REMONUMENTATION

APR 25 1995

## COMMISSION

### LAND CORNER RECORDATION CERTIFICATE Filing Requirement of Act 74, Mich. P.A. 1970

For corners in

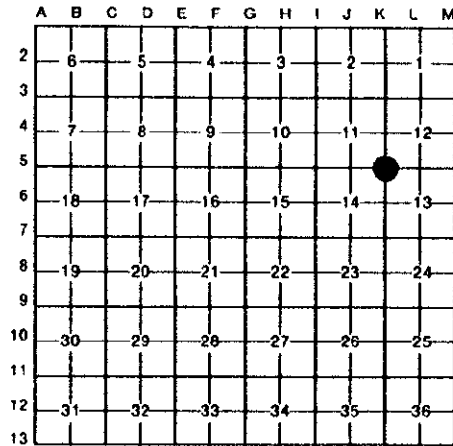
<u>ONTONAGON</u> (County)	Located In:	Corner Code #
1. Public Land Survey	T <u>48</u> R <u>43</u>	<u>K - 5</u>
	T _____ R _____	_____
	T _____ R _____	_____
	T _____ R _____	_____
2. Property Controlling in Section	S _____ T _____ R _____	_____
	S _____ T _____ R _____	_____
3. Miscellaneous Property in Sec.	S _____ T _____ R _____	_____
	S _____ T _____ R _____	_____
4. Lot No. _____, Recorded Plat _____		
5. Private Claims _____		

Recorded December 5 1994  
at 2:05 o'clock P. M. in  
Liber 3 page 224  
Julie Mabey  
Register of Deeds

Register of Deeds Stamp & File Number

Section Corner 11, 12, 13 & 14, T48N R43W

I, Earl W. Applekamp, in a field survey on November 04, 1994, do hereby certify that under requirements of P.A. 74, Michigan P.A. of 1970, the corner points mentioned in lines 1 and 2 above were in conformance with regulations and rules therefore as required in the current manual of survey instructions of the United States Department of the Interior, Bureau of Land Management or by a decree of a Court of Law and/or that the corner points mentioned in lines 3, 4 and 5 above were in conformance with the rules of the Michigan Board of Land Surveyors or by a Decree of a Court of Law, established, re-established, monumented, re-monumented, recovered, found as expressed below:



**NOTE: Not more than 4 corners, all in the same town and range, may be recorded on this certificate.**

A. Description of original monument and accessories and/or subsequent restoration:

Corner established by Austin Burt, U.S. Deputy Surveyor, August 1848.  
Set Maple Post.

Original bearing trees:

- Y. Birch 10" S40°W 34 Links (22.44')
- Maple 10" N54°E 31 Links (20.46')

**ONTONAGON COUNTY**  
**PEER APPROVED**  
*EW Applekamp*  
Dist Co Rep  
11-30-94

B. Description of corner evidence found and/or method applied in restoring or reestablishing corner:

Found 1" Drill Steel marking Corner location. This was used for several surveys in the area. In 1973 this corner was marked by a wooden post and replaced with a 1" Drill Steel. Corner is located at the intersection of a road East and South. Corner is in agreement with original call East to Lake Gogebic.

Research on file with County Remonumentation Program Representative.

C. Description of monument for corner and accessories established to perpetuate locating the position of the corner:

At the corner position I set a 2 1/4"x30" long split base aluminum pipe with a 3 1/2" cap stamped to read: County Remonumentation, S 11, S 12, S13, S 14, T48N R43W, 1994, P.S. 17610. The following trees and objects were used to tie in the corner.

- 4" Ash N42°W 16.19' - 6" B. Ash N74°E 28.25'
- 6" B. Ash S57°W 28.11' - Steel sign post South 1.5'



Signed by Earl W. Applekamp  
Surveyor's Michigan License No. 17610

Date November 25, 1994

224