

**SURVEY & REMONUMENTATION**

APR 29 1996

**COMMISSION**

JUDITH D. ROEMM  
 Ontonagon County  
 LC 3/324 JEM Fee: 9.00  
 09/25/95  
 14:56  
 Page 1 of 1

**LAND CORNER RECORDATION CERTIFICATE**  
**Filing Requirement of Act 74, Mich. P.A. 1970**

For corners in

Ontonagon  
 (County)

Located In:

Corner Code #

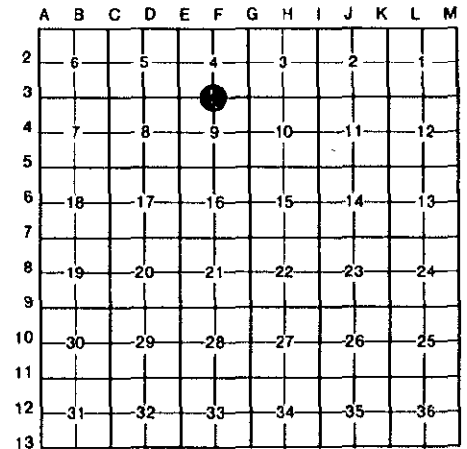
- |                                    |   |    |   |    |    |     |
|------------------------------------|---|----|---|----|----|-----|
| 1. Public Land Survey              | T | 49 | N | 42 | W. | F-3 |
|                                    | T |    | R |    |    |     |
|                                    | T |    | R |    |    |     |
|                                    | T |    | R |    |    |     |
| 2. Property Controlling in Section | S |    | T |    | R  |     |
|                                    | S |    | T |    | R  |     |
| 3. Miscellaneous Property in Sec.  | S |    | T |    | R  |     |
|                                    | S |    | T |    | R  |     |

Register of Deeds Stamp & File Number

4. Lot No. \_\_\_\_\_, Recorded Plat \_\_\_\_\_  
 5. Private Claims \_\_\_\_\_

1/4 Corner 4 & 9 T.49 N., R.42 W.

I, Richard L. Drahn in a field survey on August 22, 19 95, do hereby certify that under requirements of P.A. 74, Michigan P.A. of 1970, the corner points mentioned in lines 1 and 2 above were in conformance with regulations and rules therefore as required in the current manual of survey instructions of the United States Department of the Interior, Bureau of Land Management or by a decree of a Court of Law and/or that the corner points mentioned in lines 3, 4 and 5 above were in conformance with the rules of the Michigan Board of Land Surveyors or by a Decree of a Court of Law; established, re-established, monumented, re-monumented, recovered, found as expressed below:



**NOTE: Not more than 4 corners, all in the same town and range, may be recorded on this certificate.**

**A. Description of original monument and accessories and/or subsequent restoration:**

Corner established by William Burt in 1848. Original B.T.s --- Y. Birch 15" S.45 W. 38 links (25.08') --- B. Ash 8" N.05 E. 24 links (15.84').

Corner restored by Donald D. Lappala, RLS 12585 on 15/10/69 after recovering a portion of the original post, the stump remains of the original B.T.s and a 23" live GLO witness tree. He set a 2 1/2" by 5' galvanized iron pipe with a 3" stamped cap and the following new bearing trees: --- 13" Yellow Birch (now a dead yellow birch stump) N.28 W. 26.6' --- 15" Black Ash (now a decayed ash stump) S.73 E. 15.5' --- 6" Black Ash S.50 W. (now a decayed ash stump) 12.9'

**B. Description of corner evidence found and/or method applied in restoring or reestablishing corner:**

Corner recorded in Ontonagon County in USFS Liber, Page E-11 on 12/5/70  
 Act 74 research form on file with Ontonagon County Records.

Recovered Mr. Lappalas monument as described, all bearing trees dead and down. No evidence of Y. Birch GLO B.T., Ash B.T. now a decayed stump, GLO witness tree now a large decayed ash stump. Area shows signs of periodic flooding no live trees in area.

**PEER GROUPE APPROVED**

*Earl Lappala* 9-20-95  
 COUNTY REPRESENTATIVE

**C. Description of monument for corner and accessories established to perpetuate locating the position of the corner:**

Referenced the following bearing objects:

4" X 4" X 7' Cedar sign post	N.58 W.	2.5'
6' Steel sign post	N.41 E.	3.77'
6' " " " "	S.65 E.	7.32'
6' " " " "	S.44 W.	6.03'

Resource Grade GPS lat. 46-39.841 North  
 long. 89-33.785 West



Signed by Richard L. Drahn

Date September 10, 1995

Surveyor's Michigan License No. 21564