

LAND CORNER RECORDATION CERTIFICATE
 Filing Requirement of Act 74, Mich. P.A. 1970

For corners in

<u>Ontonagon</u> (County)	Located In:	Corner Code #
1. Public Land Survey	T <u>50N</u> R <u>38W</u>	<u>C-5</u>
	T _____ R _____	_____
	T _____ R _____	_____
	T _____ R _____	_____
2. Property Controlling in Section	S _____ T _____ R _____	_____
	S _____ T _____ R _____	_____
3. Miscellaneous Property in Sec.	S _____ T _____ R _____	_____
	S _____ T _____ R _____	_____

SURVEY &
REMONUMENTATION

OCT 8 9 1997

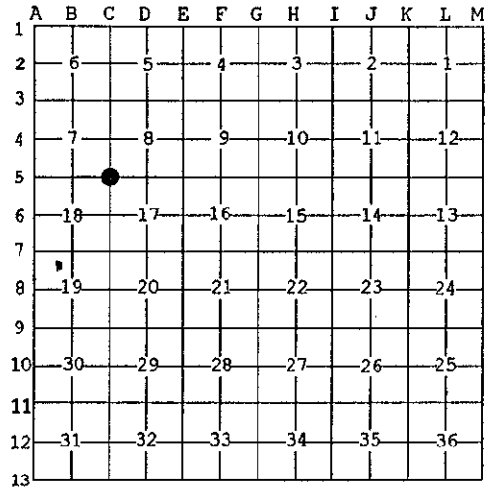
COMMISSION

Register of Deeds Stamp & File Number

4. Lot No. _____, Recorded Plat _____
 5. Private Claims _____

I, Joseph C. Domitrovich, in a field survey on September 2, 19 97 do hereby state that under requirements of P.A. 74, Michigan P.A. of 1970, the corner points mentioned in lines 1 and 2 above were in conformance with regulations and rules therefore as required in the current manual of survey instructions of the United States Department of the Interior, Bureau of Land Management or by a decree of a Court of Law and /or that the corner points mentioned in lines 3, 4 and 5 above were in conformance with the rules of the Michigan Board of Land Surveyors or by a Decree of a Court of Law; established, re-established, monumented, recovered, found as expressed below:

NOTE: Not more than 2 corners, all in the same town and range, may be recorded on this certificate.



(C-5) Corner Common to Sections 7, 8, 17, & 18, T50N, R38W

A. Description of original monument and accessories and/or subsequent restoration:

- 1847 - Sylvester W. Higgins set post.
 12" Hemlock N 20° W 17 links
 12" Hemlock S 30° E 26 links

PEER GROUP APPROVAL
Carl W. Applekamp
COUNTY REPRESENTATIVE
 9-17-97

- 1954 - Michigan State Highway Department, for M-26 Highway Construction Plans, found 1 1/4" iron pipe.
 Fence Post S 30° E 29.21'
 8" Maple West 44.45'
 5" Elm N 50° E 55.50'

Also, they show a distance of 5215.64' West to a 1 1/2" iron pipe at the SW Corner of Section 7.

B. Description of corner evidence found and/or method applied in restoring or reestablishing corner:

The original corner and accessories have been destroyed by road construction and farming. The M.S.H.D. corner has also been removed by road reconstruction. I found the M.S.H.D. Elm B.T., now a dead 9" stub. I recreated the M.S.H.D. corner position using the remaining B.T. This position falls at the intersection of centerlines of a gravel road to the East and an old roadbed to the North. IT also works with 1/16 fences to the North and East. The distance to the SW corner of Section 7 is 26.37' longer than M.S.H.D. and 154.07' longer than GLO. Since I recovered the same corner positions as the Highway Department, I can only assume that an error occurred in their field measurements or office computations. I believe the difference from GLO measurement is the result of error or fraudulent work in the original survey. Distance West to stream crossing from this position works reasonably well: 874' GLO & 843' measured. I accepted the recreated position as the Section corner and have monumented it as such.

Research on file with County Remonumentation Representative.

C. Description of monument for corner and accessories established to perpetuate locating the position of the corner:

Corner is a 5/8" x 24" iron pin with a 3" diameter aluminum cap stamped to read: COUNTY REMONUMENTATION; T.50N, R.38W; S. 7, S.8, S.17, S. 18; 1997; P.S. 37273. I also established a reference monument (R.M.) to the Northwest, a 2" x 30" aluminum pipe with a 3" diameter aluminum cap stamped to indicate that the corner is S 30° E 37.15'.

- | | | |
|----------------------|-----------------|----------------------|
| 8" Ash | N 61° E | 77.93' |
| Power Pole | S 29° W | 64.06' (P.K. Nail) |
| NW Garage Cor. | S 83° W | 48.42' (No nail set) |
| R.M. | N 30° 40' 02" W | 37.15' |
| SW Cor. Section 7 | N 89° 54' 40" W | 5242.01' |
| S 1/4 Cor. Section 8 | S 89° 10' 23" E | 2604.81' |
| W 1/4 Cor. Section 8 | N 01° 56' 27" W | 2631.86' |

NOTE: Bearings are magnetic. Distances are to nail in side of witness objects unless noted.

Signed by Jh C. Domitrovich

Date 9/16/97

Surveyor's Michigan License No. 37273

