

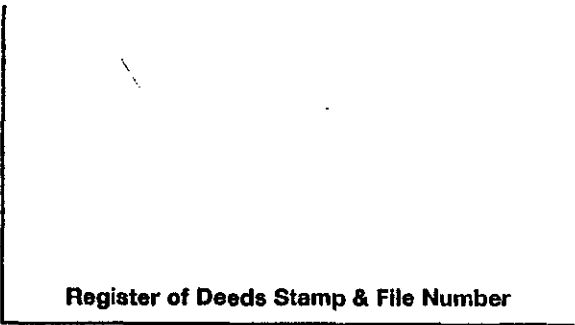
DEC 16 1996

COMMISSION

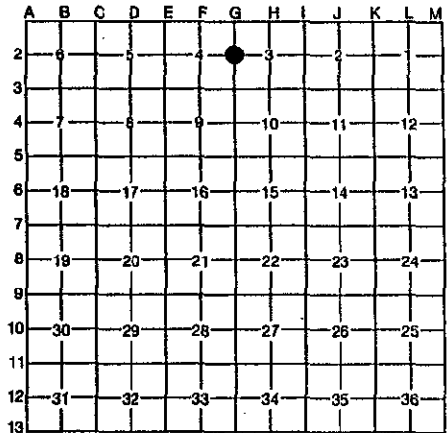
LAND CORNER RECORDATION CERTIFICATE
 Filing Requirement of Act 74, Mich. P.A. 1970

For corners in Ontonagon Located In: _____ Corner Code # _____
 (County)

1. Public Land Survey	T	<u>50N</u>	R	<u>39W</u>	<u>G-2</u>
	T	_____	R	_____	_____
	T	_____	R	_____	_____
	T	_____	R	_____	_____
2. Property Controlling in Section	S	_____	T	_____	R
	S	_____	T	_____	R
3. Miscellaneous Property in Section	S	_____	T	_____	R
	S	_____	T	_____	R



4. Lot No. _____, Recorded Plat _____
 5. Private Claims _____



I, Joseph C. Domitrovich, in a field survey on June 6, 1996, do hereby certify that under requirements of P.A. 74, Michigan P.A. of 1970, the corner points mentioned in lines 1 and 2 above were in conformance with regulations and rules therefore as required in the current manual of survey instructions of the United States Department of the Interior, Bureau of Land Management or by a decree of a Court of Law and/or that the corner points mentioned in lines 3, 4 and 5 above were in conformance with the rules of the Michigan Board of Professional Surveyors or by a Decree of a Court of Law; established, re-established, monumented, re-monumented, recovered, found as expressed below:

NOTE: Not more than 4 corners, all in the same town and range, may be recorded on this certificate.

A. Description of original monument and accessories and/or subsequent restoration:
(G-2) 1/4 Corner common to Sections 3 & 4, T50N, R39W

- 1847 - S.W. Higgins set post
 12" Hemlock S 65° E 16 links
 14" Hemlock S 70° W 16 links

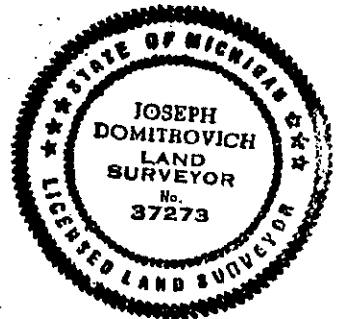
B. Description of corner evidence found and/or method applied in restoring or reestablishing corner:
 Found no evidence of original corner or accessories due to heavy logging. Natural feature calls to north and south of this corner do not coincide with present locations of streams. I re-established corner position by single proportionate measurement.

Research on file with County Remonumentation Representative.

C. Description of monument for corner and accessories established to perpetuate locating the position of the corner:
 Corner is a 3/4" x 48" aluminum rod with a 3" diameter aluminum cap stamped to read: 1/4 S.3, S.4; T.50N., R.39W.; 1996; P.S. 37273. Corner falls in low area.

- Witnesses:
- | | | |
|-----------------|---------|--------|
| 6" Soft Maple | N 10° E | 25.55' |
| 8" Poplar | S 78° E | 31.48' |
| 4" Black Ash | S 11° E | 18.15' |
| Steel Sign Post | South | 1.51' |
| 11" White Ash | S 76° W | 34.50' |

PEER GROUP APPROVED
Carl W. Dapke
 COUNTY REPRESENTATIVE
 07-08-96



NOTE: Bearings are magnetic. Distances are to nail in side of witness objects unless noted.

Signed by J. C. Domitrovich Date 7/3/96
 Surveyor's Michigan License No. 37273