

LAND CORNER RECORDATION CERTIFICATE

For corners in

| <u>ONTONAGON</u> (County) | Located In: | Corner Code # |
|---------------------------------------|----------------|---------------|
| 1. Public Land Survey | T50N R 42W | E-5 |
| | T___ R___ | _____ |
| | T___ R___ | _____ |
| | T___ R___ | _____ |
| 2. Property Controlling in Section | S___ T___ R___ | _____ |
| | S___ T___ R___ | _____ |
| 3. Miscellaneous Property in Sec. | S___ T___ R___ | _____ |
| | S___ T___ R___ | _____ |

**SURVEY &
 REMONUMENTATION**

MAR 23 2000

SECTION

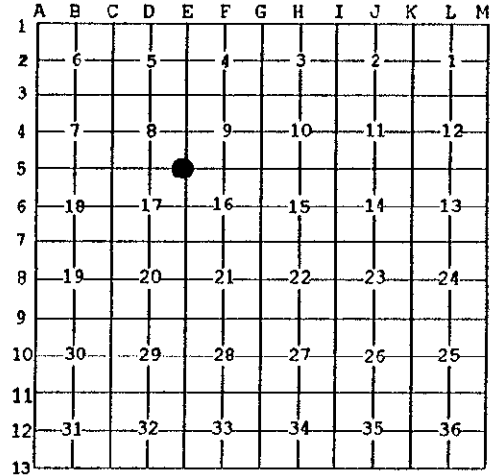
Register of Deeds Stamp & File Number

4. Lot No. _____, Recorded Plat _____
 5. Private Claims _____

Section Corner common to Sections 8, 9, 16 & 17, T50N R42W.

I, Earl W. Applekamp, in a field survey on Dec. 12, 1998 do hereby state that under requirements of P.A. 74, Michigan P.A. of 1970, the corner points mentioned in lines 1 and 2 above were in conformance with regulations and rules therefore as required in the current manual of survey instructions of the United States Department of the Interior, Bureau of Land Management or by a decree of a Court of Law and /or that the corner points mentioned in lines 3, 4 and 5 above were in conformance with the rules of the Michigan Board of Land Surveyors or by a Decree of a Court of Law; established, re-established, monumented, recovered, found as expressed below:

NOTE: Not more than 2 corners, all in the same town and range, may be recorded on this certificate.



A. Description of original monument and accessories and/or subsequent restoration:
 Original corner established by Austin Burt, U.S. Deputy Surveyor, June 15, 1848. Set Black Ash Post.

ORIGINAL BEARING TREES:

| | | |
|-----------|-------|------------|
| 14" Cedar | S38°E | 9.24 feet |
| 10" Lynn | N53°W | 15.84 feet |

PEER GROUP APPROVED
Earl W. Applekamp
 COUNTY REGISTERED SURVEYOR
 5-11-99

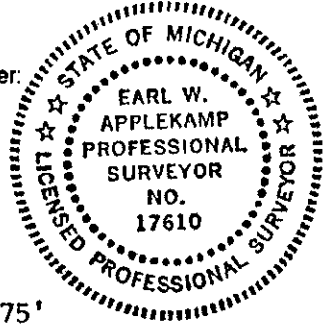
B. Description of corner evidence found and/or method applied in restoring or reestablishing corner:
 At the corner position I found a 1"X30" pipe and a downed 6" square Cedar Post. I also found a live 30" Cedar, original bearing tree at the bearing and distance shown on the original field notes. I accepted the 1" pipe as being the true position of the corner and monumented it as shown below.

Research on file with the Ontonagon County Remonumentation Program Representative.

C. Description of monument for corner and accessories established to perpetuate locating the position of the corner:

At the corner position I replaced the 1" pipe with a 2 1/2"X30" split base aluminum pipe with a 3" cap stamped to read: County Remonumentation, T50N R42W, S8, S9, S17, S16, 1998, P.S. 17610. I established 3 bearing trees and a reference object.

| | | | | | | |
|--------------------------|-----------|------------|---|--------------------|----------|--------|
| Nail in 8" Maple | Due South | 29.10' | - | Nail in 30" Cedar | S51°E | 10.25' |
| Nail in 8" Maple | N27°W | 35.15' | - | 6" Steel Sign Post | Due West | 0.75' |
| Copper Range Coordinates | | N24733.09' | | E29987.11 | | |



Signed by Earl W. Applekamp
 Surveyor's Michigan License No. 17610

Date April 20, 1999