

JUDITH D. ROEHM

1P

Ontonagon County

Page 1 of 1

LC 5/274

FILED Date 12/22/1999 Time 14:50:12

LAND CORNER RECORDATION CERTIFICATE  
Filing Requirement of Act 74, Mich. P.A. 1970

RECORDING FEE:

9.00

For corners in

ONTONAGON (County)	Located In:	Corner Code #
1. Public Land Survey	T50N R 42W	I-5
	T___ R___	_____
	T___ R___	_____
	T___ R___	_____
2. Property Controlling in Section	S___ T___ R___	_____
	S___ T___ R___	_____
3. Miscellaneous Property in Sec.	S___ T___ R___	_____
	S___ T___ R___	_____

SURVEY &  
REMONUMENTATION

MAR 23 2000

SECTION

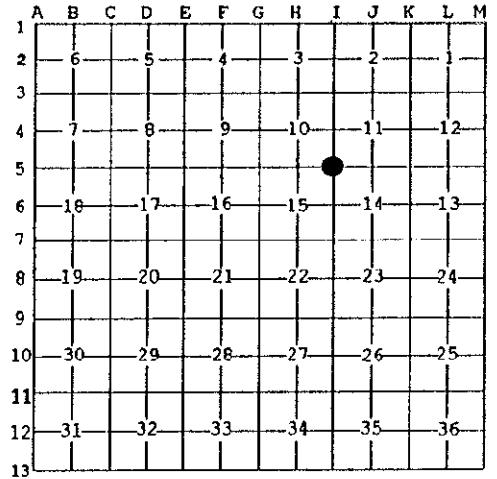
Register of Deeds Stamp & File Number

- 4. Lot No. \_\_\_\_\_, Recorded Plat \_\_\_\_\_
- 5. Private Claims \_\_\_\_\_

Section Corner common to Sections 10, 11, 14 & 15, T50N R42W.

I, Earl W. Applekamp, in a field survey on Nov. 26, 1999 do hereby state that under requirements of P.A. 74, Michigan P.A. of 1970, the corner points mentioned in lines 1 and 2 above were in conformance with regulations and rules therefore as required in the current manual of survey instructions of the United States Department of the Interior, Bureau of Land Management or by a decree of a Court of Law and /or that the corner points mentioned in lines 3, 4 and 5 above were in conformance with the rules of the Michigan Board of Land Surveyors or by a Decree of a Court of Law, established, re-established, monumented, recovered, found as expressed below:

NOTE: Not more than 2 corners, all in the same town and range, may be recorded on this certificate.



A. Description of original monument and accessories and/or subsequent restoration:

Original Corner established by Austin Burt, U.S. Deputy Surveyor, June 11, 1848. Set Sugar Post. ORIGINAL BEARING TREES: Sugar 12" S74°W, 22 Links (14.52 Feet); Hemlock 30", N45°E, 6 Links (3.96 Feet). During construction of the L.P. Walsh Road, corner was restored. The drawings prepared by R.S. Scott Engineering Co. Inc., of Alpena, Michigan, dated July 29, 1967 identify the corner at Station 79+01.6 and 42 feet North of the centerline of the L.P. Walsh Road. This information was not recorded with the Register of Deeds.

B. Description of corner evidence found and/or method applied in restoring or reestablishing corner:

Based on the information above I found a 3/4"X24" pipe with a 2" brass cap flush with the ground. I accepted this as being the only logical position for the corner. I replaced the 3/4" X24" pipe w/cap and set a monument described in "C" below.

PEER GROUP APPROVED  
Earl W. Applekamp  
COUNTY REGISTER OF DEEDS  
12-20-99

Research on file with the Ontonagon County Remonumentation Program Representative.

C. Description of monument for corner and accessories established to perpetuate locating the position of the corner:

At the corner position I set a 2 1/2"X30" split base aluminum pipe with a 3" cap flush with the top of ground. Cap is stamped to read: County Remonumentation, T50N R42W, S10, S11, S14, S15, 1999, P.S. 17610. I established five bearing objects.



- Nail in P. Pole N75°W 134.18' - Centerline L.P. Walsh Road, South, 42.22'
- Nail in P. Pole N43°W 103.19' - 6' Steel Sign Post North 0.46'
- Nail in P. Pole N82°E 221.05'

Signed by Earl W. Applekamp  
Surveyor's Michigan License No. 17610

Date December 9, 1999