

LAND CORNER RECORDATION CERTIFICATE
Filing Requirement of Act 74, Mich. P.A. 1970

For corners in
Ontonagon
 (County)

Located in:	Corner Code #
1. Public Land Survey	T 51N R 37W L9
	T 51N R 37W K10
	T R
	T R
2. Property Controlling in Section	S T R
	S T R
3. Miscellaneous Property in Sec.	S T R
	S T R

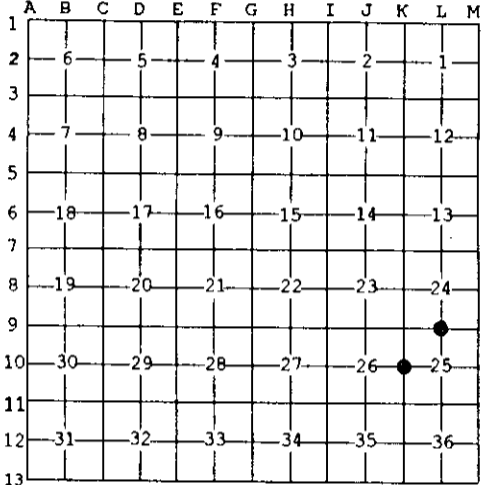
Register of Deeds Stamp & File Number

4. Lot No. _____, Recorded Plat _____
 5. Private Claims _____

Sep 15 2004

I, Stephan J. Szyszkoski, in a field survey on _____, 20____ do hereby state that under requirements of P.A. 74, Michigan P.A. of 1970, the corner points mentioned in lines 1 and 2 above were in conformance with regulations and rules therefore as required in the current manual of survey instructions of the United States Department of the Interior, Bureau of Land Management or by a decree of a Court of Law and/or that the corner points mentioned in lines 3, 4 and 5 above were in conformance with the rules of the Michigan Board of Land Surveyors or by a Decree of a Court of Law; established, re-established, monumented, recovered, found as expressed below:

NOTE: Not more than 2 corners, all in the same town and range, may be recorded on this certificate.



A. Description of original monument and accessories and/or subsequent restoration:
 (L9) Quarter corner common to Sections 24-25. 1846. Established by S.W.Higgins, Deputy Surveyor: West corrected between Sec 24 & 25 ...40.15 Set 1/4 Sec. post. Sugar 10 S50E 25, Sugar 12 N40W 30. ... 80.30 Sec. corner.
 (K10) Quarter corner common to Sections 25-26. 1846 - Established by S.W.Higgins, Deputy Surveyor: North between Sections 25 & 26 ...40.00 Set 1/4 Sec. post. Cedar 10 S57W 22, Sugar 10 N20E 32. ... 80.00 Set post cor Sections 23,24,25,26.

B. Description of corner evidence found and/or method applied in restoring or reestablishing corner:
 (L9) The original post and accessories were not recovered. Reestablished the corner midway and on the section line between monumented and recorded section corners M9 and K9, 2514.16' east and west.
 (K10) The original post and accessories were not recovered. Reestablished the corner midway and on the section line between monumented and recorded section corners K9 and K11 2669.24' north and south.

C. Description of monument for corner and accessories established to perpetuate locating the position of the corner:

(L9) Set 1"IDx32" I.pipe with 4" alum. MDNR cap. Set measuring nails in the following marked trees: 8" Y.Birch N10W 17.4' "1/4S N8T" 7" Maple S77E 9.3' do 6" Sugar S24E 15.5' do 11" Maple N70W 3.7' do Set sq'd Sugar post adjacent. Bearings are magnetic. Distances are to nail with tag.	(K10) Set 1"IDx32" I.pipe with 4" alum. MDNR cap. Set measuring nails in the following marked trees: 14" Basswood N35E 18.8' "1/4S N8T" 5" Sugar S82E 2.6' do 18" Hemlock S39W 49.1' do 4" Sugar N78W 10.6' do Bearings are magnetic. Distances are to nail with tag.
--	--



Signed by Stephan J. Szyszkoski Date 11/3/04
 Surveyor's Michigan License No. 33986