

JUDITH D. ROEHN
LAND CORNER RECORDATION CERTIFICATE Ontonagon County
 Filing Requirement of Act 74, Mich. P.A. 1970 of 1

1F

LC 5/262

JEM Date 12/21/1999 Time 11:12:44
 RECORDING FEE: 9.00

For corners in

Ontonagon County	Located in:	Corner Code #
1. Public Land Survey	T51N R39W	E - 1
	T R	
	T R	
	T R	
2. Property Controlling in Section	S T R	
	S T R	
3. Miscellaneous Property in Sec.	S T R	
	S T R	
4. Lot No.	Recorded Plat	
5. Private Claims		

SURVEY & REMONUMENTATION

MAR 23 2000

SECTION

Register of Deeds Stamp & File Number

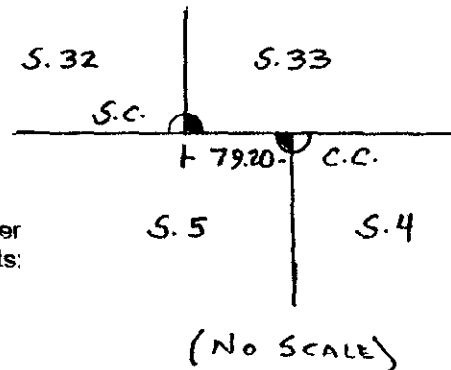
	A	B	C	D	E	F	G	H	I	J	K	L	H
1					●								
2	6		5			4		3		2		1	
3													
4	7		8			9		10		11		12	
5													
6	18		17			16		15		14		13	
7													
8	19		20			21		22		23		24	
9													
10	30		29			28		27		26		25	
11													
12	31		32			33		34		35		36	
13													

I, Joseph C. Domitrovich, in a field survey on December 3, 1999, do hereby state that under requirements of P.A. 74, Michigan P.A. of 1970, the corner points mentioned in lines 1 and 2 above were in conformance with regulations and rules therefore as required in the current manual of survey instructions of the United States Department of the Interior, Bureau of Land Management or by a decree of a Court of Law and/or that the corner points mentioned in lines 3, 4 and 5 above were in conformance with the rules of the Michigan Board of Land Surveyors or by a Decree of a Court of Law; established, re-established, monumented, recovered, found as expressed below:

NOTE: Not more than 2 corners, all in the same town and range, may be recorded on this certificate.

A. Description of original monument and accessories and/or subsequent restoration:
 (E - 1) Closing Corner Common to Sections 4 & 5, T51N, R39W

- 1845 Austin Burt intersected North boundary 120 links East of Post and set a Post, corner of sections 4 & 5.
 24" Hemlock S 22°W 16 links
 24" Hemlock S 28°E 29 links
- 1966 C.C. Lindgren, R.L.S. 14098, for Michigan State Highway Department, found a 1" Iron pin in strawberry patch. He mistakenly called this a corner common with the township to the north. He established 3 bearing objects:
 SW cor. of Storage Shed N 45°E 39.57'
 6" Ironwood S 65°W 61.15'
 18" Ash S 20°W 50.50'



B. Description of corner evidence found and/or method applied in restoring or reestablishing corner:

I found no remains of the original corner or accessories. I recovered the 1" iron pin called for by Lindgren. When I monumented the standard corner in October 1995, I determined that this iron pin was actually the closing corner. I recovered 2 of Lindgren's bearing objects and added three additional bearing objects. (See Sketch)

Research on file with County Remonumentation Representative.

DEED GROUP APPROVED
Earl W. Applekamp
 COUNTY REMONUMENTATION REPRESENTATIVE

C. Description of monument for corner and accessories established to perpetuate locating the position of the corner:

Corner is a 3" x 30" aluminum pipe with a 3" diameter aluminum cap placed over the existing 1" iron pin. The cap is stamped to read: COUNTY REMONUMENTATION; C.C., T51N, R39W; S. 4, S. 5; 1999; P.S. 37273. Corner falls in a plowed garden area and was set 18" below ground. No sign rail was set since this corner is in the middle of the Landowner's yard. Ties:

N 1/4 Corner Sec. 5	West along Townline	2657.22'
N 1/4 Corner Sec. 4	East along Townline	2616.67'
E 1/4 Corner Sec. 5	S 00°14'18"E	2603.73'
Standard Corner	West	79.20' (120 links)
NE corner of shed (Shed is leaning)	N 54°E	40' (39.57' Lindgren)
NE corner of blk. foundation of entrance to house	S 31°W	91.59'
NW corner of blk. foundation of house	S 55°W	83.62'
8" Ironwood (new nail @ grd. level)	S 72°W	61.23' (M.S.M.D. B.T.)
14" Oak (nail at ground level)	S 20°E	34.67'

NOTE: Bearings to witness objects are magnetic. Distances are to a nail in side of the witness object unless noted.

Signed by Joseph C. Domitrovich

Date 12/14/99

Surveyor's Michigan License No. 37273

FORM APPROVED BY MICHIGAN STATE BOARD OF PROFESSIONAL SURVEYORS, JAN. 28, 1971
 REVISED MAY 14, 1975
 REVISED JAN. 1983
 REVISED OCT. 1995

