

DEC 16 1996

JUDITH D. ROEHM
 Ontonagon County
 LC 4/ 41 JEM Fee: 9.00
 05/09/96
 10:40
 Page 1 of 1

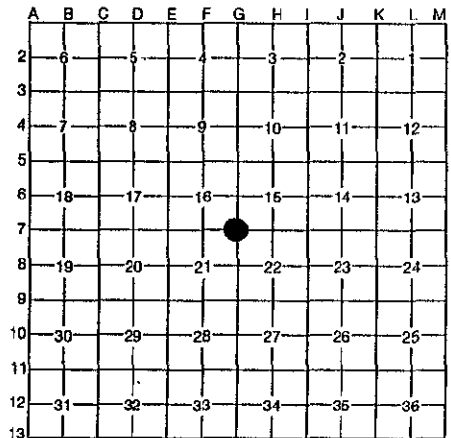
COMMISSION LAND CORNER RECORDATION CERTIFICATE

Filing Requirement of Act 74, Mich. P.A. 1970

For corners in <u>Ontonagon</u> (County)	Located In:	Corner Code #
1. Public Land Survey	T 51N R 39W	G-7
	T _____ R _____	_____
	T _____ R _____	_____
	T _____ R _____	_____
2. Property Controlling in Section	S _____ T _____ R _____	_____
	S _____ T _____ R _____	_____
3. Miscellaneous Property in Section	S _____ T _____ R _____	_____
	S _____ T _____ R _____	_____

Register of Deeds Stamp & File Number

4. Lot No. _____, Recorded Plat _____
 5. Private Claims _____



I, Joseph C. Domitrovich, in a field survey on November 2, 19 95, do hereby certify that under requirements of P.A. 74, Michigan P.A. of 1970, the corner points mentioned in lines 1 and 2 above were in conformance with regulations and rules therefore as required in the current manual of survey instructions of the United States Department of the Interior, Bureau of Land Management or by a decree of a Court of Law and/or that the corner points mentioned in lines 3, 4 and 5 above were in conformance with the rules of the Michigan Board of Professional Surveyors or by a Decree of a Court of Law; established, re-established, monumented, re-monumented, recovered, found as expressed below:

NOTE: Not more than 4 corners, all in the same town and range, may be recorded on this certificate.

A. Description of original monument and accessories and/or subsequent restoration:

(G-7) Corner common to Sections 15, 16, 21 and 22, T51N, R39W

- 1845 - Austin Burt for William A. Burt set post
 10" Birch S 41° W 46 links
 8" Sugar N 64° E 21 links

1947 - U.S. Highway 45 R.O.W. drawings on file at Ontonagon County Road Commission show corner at a distance of 5273.36' East of Section corner to the West but do not indicate what the corner is.

B. Description of corner evidence found and/or method applied in restoring or reestablishing corner:

All original evidence has been obliterated due to extensive clear cutting around corner. Found a 1 1/2" well point at the corner position, 2 dead poplars with beaver blazes facing it, and an American Can location poster indicating that they found a pipe, post and "weasel" at the corner in 1983. Harvey Peterson, land owner to the west, stated that this wellpoint was the accepted corner when he moved to his farm in the 1950's. He further stated that this corner had been re-established years ago by Ned Hawley and that a wood post used to stand by the wellpoint.

This corner works well with GLO and Highway distance to the west. Accepted this position as the section corner and monumented it as such.

PEER GROUP APPROVED

Carl W. Applekamp
 COUNTY REPRESENTATIVE

Research on file with County Remonumentation Representative.

C. Description of monument for corner and accessories established to perpetuate locating the position of the corner:

Corner is a 2" x 30" aluminum pipe with a 3" diameter aluminum cap stamped to read: T.51N., R39W.; S.15, S.16, S.21, S.22; 1996; P.S. 37273. Corner falls 14' north of centerline of an east-west woods road.

Witnesses:

3" Maple in clump	S 08° E	39.78'
14" dead Poplar w/blaze	N 23° W	5.09'
2" Poplar	N 05° W	13.85'
2" Poplar	N 30° E	9.54'
12" dead Poplar w/blaze	N 60° E	14.74'
Steel Sign Post	East	1'



NOTE: Bearings are magnetic. Distances are to nail in side of witness objects unless noted.

Signed by Joseph C. Domitrovich

Date 5/6/96

Surveyor's Michigan License No. 37273