

OCT 30 1997

LAND CORNER RECORDATION CERTIFICATE  
Filing Requirement of Act 74, Mich. P.A. 1970

COMMISSION

For corners in

JUDITH D. ROEHM  
Ontonagon County  
LC 4/309 JJT Fee: 9.00  
07/18/97  
11:26  
Page 1 of 1

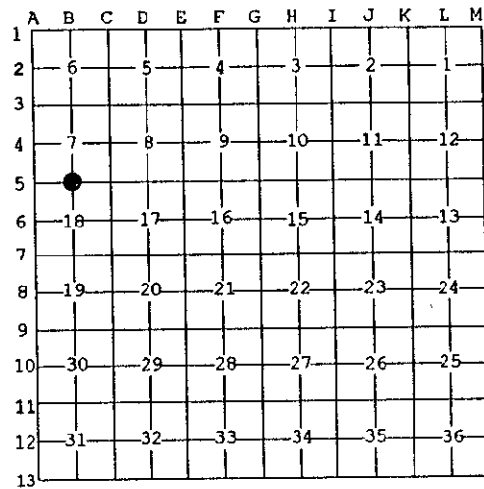
<u>Ontonagon</u> (County)	Located In:	Corner Code #
1. Public Land Survey	T <u>51N</u> R <u>40W</u>	<u>B-5</u>
	T ___ R ___	_____
	T ___ R ___	_____
	T ___ R ___	_____
2. Property Controlling in Section	S ___ T ___ R ___	_____
	S ___ T ___ R ___	_____
3. Miscellaneous Property in Sec.	S ___ T ___ R ___	_____
	S ___ T ___ R ___	_____

Register of Deeds Stamp & File Number

4. Lot No. \_\_\_\_\_, Recorded Plat \_\_\_\_\_  
5. Private Claims \_\_\_\_\_

I, Joseph C. Domitrovich, in a field survey on June 11, 1997 do hereby state that under requirements of P.A. 74, Michigan P.A. of 1970, the corner points mentioned in lines 1 and 2 above were in conformance with regulations and rules therefore as required in the current manual of survey instructions of the United States Department of the Interior, Bureau of Land Management or by a decree of a Court of Law and/or that the corner points mentioned in lines 3, 4 and 5 above were in conformance with the rules of the Michigan Board of Land Surveyors or by a Decree of a Court of Law; established, re-established, monumented, recovered, found as expressed below:

NOTE: Not more than 2 corners, all in the same town and range, may be recorded on this certificate.



(B-5) 1/4 Corner Common to Sections 7 and 18, T51N, R40W

A. Description of original monument and accessories and/or subsequent restoration:

1845 - William A. Burt, D.S., set Sugar post  
16" Cedar N 78° E 75 links  
6" Hemlock S 26° W 14 links

B. Description of corner evidence found and/or method applied in restoring or reestablishing corner:

I found no remains of original corner or accessories. I re-established the corner by single proportionate measurement and on line between Section corners to the East and West. This position works well with stream call to West. (33' GLO) (31' measured)

Distances to Section corners to East and West:

SW Corner Sec. 7	N 89° 56' 03" W	2721.95'
SE Corner Sec. 7	S 89° 56' 03" E	2624.83'

Research on file with County Remonumentation Representative.

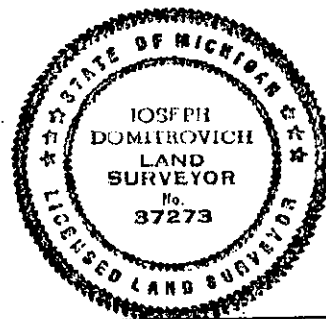
C. Description of monument for corner and accessories established to perpetuate locating the position of the corner:

Corner is a 2" x 30" aluminum pipe with a 3" diameter aluminum cap stamped: COUNTY REMONUMENTATION, T.51N, R. 40W; 1/4; S. 7, S.18; 1997; P.S. 37273.

Witnesses:

5" Yellow Birch	N 07° E	43.04'
12" Hard Maple	S 86° E	27.48'
6" Twin Hard Maple	S 43° E	22.02'
12" Hard Maple	S 32° W	54.55'
Steel Sign Post	West	0.88' (to face)

PEER GROUP APPROVED  
Earl W. Applekamp  
COUNTY REPRESENTATIVE  
7-15-97



NOTE: Bearings are magnetic. Distances are to nail in side of witness objects unless noted.

Signed by Joseph C. Domitrovich  
Surveyor's Michigan License No. 37273

Date 7/15/97