

SURVEY & REMONUMENTATION

APR 25 1995

LAND CORNER RECORDATION CERTIFICATE Filing Requirement of Act 74, Mich. P.A. 1970

COMMISSION

For corners in

ONTONAGON
(County)

Located In:

Corner Code #

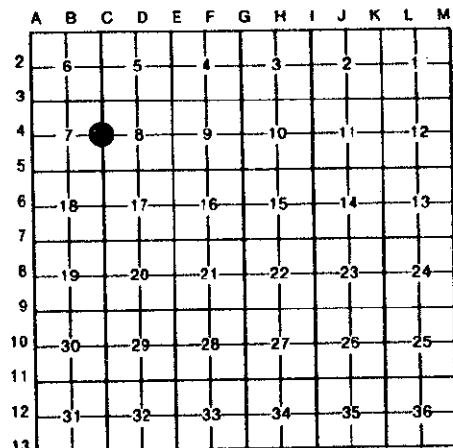
- | | | | |
|---------------------------------------|-------------------------|-----|--|
| 1. Public Land Survey | T <u>51</u> R <u>40</u> | C-4 | |
| | T _____ R _____ | | |
| | T _____ R _____ | | |
| | T _____ R _____ | | |
| 2. Property Controlling in Section | S _____ T _____ R _____ | | |
| | S _____ T _____ R _____ | | |
| 3. Miscellaneous Property in Sec. | S _____ T _____ R _____ | | |
| | S _____ T _____ R _____ | | |
| 4. Lot No. _____, Recorded Plat _____ | | | |
| 5. Private Claims _____ | | | |

Recorded December 19 1994
At 2:30 o'clock P.M.
Liber Survey 3 page 245
Julie Marley Deputy
Register of Deeds

Register of Deeds Stamp & File Number

$\frac{1}{4}$ Corner S. 7, S. 8, T51N R40W

I, Earl W. Applekamp, in a field survey on November 25, 19 94, do hereby certify that under requirements of P.A. 74, Michigan P.A. of 1970, the corner points mentioned in lines 1 and 2 above were in conformance with regulations and rules therefore as required in the current manual of survey instructions of the United States Department of the Interior, Bureau of Land Management or by a decree of a Court of Law and/or that the corner points mentioned in lines 3, 4 and 5 above were in conformance with the rules of the Michigan Board of Land Surveyors or by a Decree of a Court of Law: established, re-established, monumented, re-monumented, recovered, found as expressed below:



NOTE: Not more than 4 corners, all in the same town and range, may be recorded on this certificate.

A. Description of original monument and accessories and/or subsequent restoration:

Original Corner established by William A. Burt, U.S. Deputy Surveyor, September 1845. Set Fir Post.

Bearing Trees:

| | | | |
|----------------|-------|----------|--------------|
| 8" Sugar Maple | So5°E | 15 Links | (9.90 feet) |
| 22" Hemlock | West | 25 Links | (16.50 feet) |

B. Description of corner evidence found and/or method applied in restoring or reestablishing corner:

No evidence of the original corner was found. This corner was established by single proportionate measurement between the NE and SE Corner of Section 7.

I monumented the corner as shown in Item "C".

Research on file with the County Remonumentation Program Representative.

**ONTONAGON COUNTY
PEER APPROVED**

Earl W. Applekamp
Ont. Co. Rep.
12-15-94

C. Description of monument for corner and accessories established to perpetuate locating the position of the corner:

At the corner position I set a 2 1/4" aluminum pipe with a 3 1/4" Cap stamped to read. County Remonumentation $\frac{1}{4}$, S.7, S.8, T51N R40W, 1994, P.S. 17610. Monument is flush with the ground. I tied the corner to the following trees and objects.
Power Pole N82°W 145.70' - 6" Poplar S30°E 87.46'
Centerline L.P. Walsh Rd. West 51.3'
Steel Sign Post East 1.83' - 9" Poplar N55°E 32.10'



Signed by Earl W. Applekamp
Surveyor's Michigan License No. 17610

Date December 12, 1994

245