

**LAND CORNER RECORDATION CERTIFICATE**  
**Filing Requirement of Act 74, Mich. P.A. 1970**

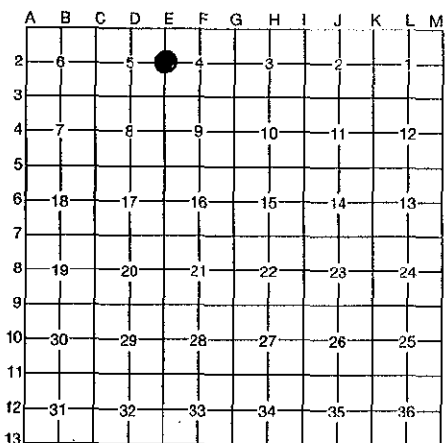
For corners in Ontonagon (County) Located In: \_\_\_\_\_ Corner Code # \_\_\_\_\_

1. Public Land Survey	T	51N	R 40W	E-2
	T	_____	R _____	_____
	T	_____	R _____	_____
	T	_____	R _____	_____
2. Property Controlling in Section	S	_____	T _____	R _____
	S	_____	T _____	R _____
3. Miscellaneous Property in Section	S	_____	T _____	R _____
	S	_____	T _____	R _____

4. Lot No. \_\_\_\_\_, Recorded Plat \_\_\_\_\_

5. Private Claims \_\_\_\_\_

**SURVEY & REMONUMENTATION**  
 MAY 22 1997  
**COMMISSION**  
 Register of Deeds Stamp & File Number



I, Joseph C. Domitrovich, in a field survey on September 12, 19 96, do hereby certify that under requirements of P.A. 74, Michigan P.A. of 1970, the corner points mentioned in lines 1 and 2 above were in conformance with regulations and rules therefore as required in the current manual of survey instructions of the United States Department of the Interior, Bureau of Land Management or by a decree of a Court of Law and/or that the corner points mentioned in lines 3, 4 and 5 above were in conformance with the rules of the Michigan Board of Professional Surveyors or by a Decree of a Court of Law; established, re-established, monumented, re-monumented, recovered, found as expressed below:

**NOTE: Not more than 4 corners, all in the same town and range, may be recorded on this certificate.**

**A. Description of original monument and accessories and/or subsequent restoration:**

**(E-2) 1/4 Corner Sections 4 & 5, T51N, R40W**

- 1845 - William A. Burt set Cedar post. 12" Hemlock N 05° E 19 links, 20" Hemlock N 36° W 81 links.
- 1941 - John Erickson, P.E., in Supervisor's Floodwood Plat, shows this corner and that he set a concrete monument 1320' North of it.
- 1969 - Michigan State Highway Dept., in M-64 Highway plans, shows this corner as a 1/2" iron in concrete. They gave three witnesses and a distance of 1322.43' North to concrete monument.
- 1980 - Robert Mick, P.S. 16936, recorded the corner in Liber 2, page 6, of Corner Records. He found a 1" drillsteel in concrete and established 3 witnesses. One is the same as the Highway Dept.
- 1986 - Bob Crampton, P.S. 24591, in survey recorded in Liber 1 of Surveys, page 114, shows that he raised the monument to the surface with a 1/2" iron rod and gives additional witnesses. One is common with Mick and Highway Dept.

**B. Description of corner evidence found and/or method applied in restoring or reestablishing corner:**

Original corner and accessories have been destroyed by road construction.

I found a 5/8" iron in centerline of Wagner Road on the extension of fences to East and West. I recovered 4 witnesses, three by Highway Dept., Mick and Crampton, and a fourth by an unknown person. Distances from 5/8" iron to recovered witnesses work well. Distance North to a found concrete monument (1321.48) works reasonably well with plat and Highway Dept.

I accepted this corner as found and placed a 3" diameter aluminum cap on it.

Research on file with County Remonumentation Representative.

**PLER GROUP REMOVED**  
*Earl W. Applekamp*  
 COUNTY REPRESENTATIVE 9-12-96

**C. Description of monument for corner and accessories established to perpetuate locating the position of the corner:**

Corner is a 5/8" iron with a 3" diameter aluminum cap stamped to read: 1/4 S.4, S. 5; T51N, R40W; 1996; P.S. 37273. I also established a reference monument (R.M.), a 2"x 30" aluminum pipe with a 3" diameter aluminum cap stamped to indicate that the corner is East 25.75'.

**Witnesses:**

10" Poplar	N 57° E	28.96'	(Mick & Crampton)
Fence Corner	East	22.87'	(Mick, Crampton, & M.S.H.D.)
8" Twin Soft Maple	S 56° E	51.75'	(Existing P.K.)
Steel Sign Post (and old wood fence corner)	West	26.77'	(M.S.H.D.)
R.M.	West	25.75'	

**NOTE: Bearings are magnetic. Distances are to nail in side of witness objects unless noted.**

Signed by J. C. Domitrovich  
 Surveyor's Michigan License No. 37273

Date 9/12/96

