

LAND CORNER RECORDATION CERTIFICATE
Filing Requirement of Act 74, Mich. P.A. 1970

For corners in Ontonagon Located In: _____ Corner Code # _____
 (County)

1. Public Land Survey T 51N R 40W (G-3)
 T _____ R _____
 T _____ R _____
 T _____ R _____

2. Property Controlling S _____ T _____ R _____
 in Section S _____ T _____ R _____

3. Miscellaneous S _____ T _____ R _____
 Property in Section S _____ T _____ R _____

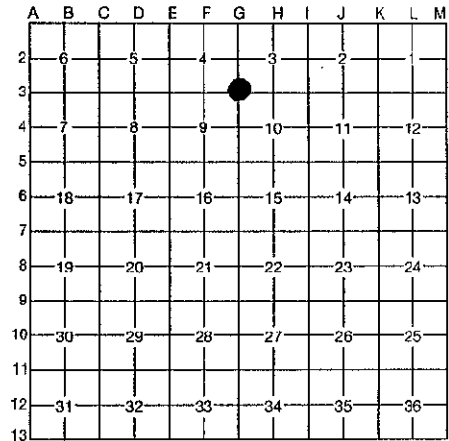
4. Lot No. _____, Recorded Plat _____

5. Private Claims _____

**SURVEY &
 REMONUMENTATION**

MAY 22 1997

COMMISSION
 Register of Deeds Stamp & File Number



I, Joseph C. Domitrovich, in a field survey on August 16, 1996, do hereby certify that under requirements of P.A. 74, Michigan P.A. of 1970, the corner points mentioned in lines 1 and 2 above were in conformance with regulations and rules therefore as required in the current manual of survey instructions of the United States Department of the Interior, Bureau of Land Management or by a decree of a Court of Law and/or that the corner points mentioned in lines 3, 4 and 5 above were in conformance with the rules of the Michigan Board of Professional Surveyors or by a Decree of a Court of Law; established, re-established, monumented, re-monumented, recovered, found as expressed below:

NOTE: Not more than 4 corners, all in the same town and range, may be recorded on this certificate.

A. Description of original monument and accessories and/or subsequent restoration:

(G-3) Corner of Sections 3, 4, 9, & 10, T51N, R40W

1845 - William A. Burt set yellow birch post.

- 16" Y. Birch S 60° W 51 links
- 12" Fir N 55° E 16 links

1928 - E. J. Donnelly, C.E., in Supervisor Carroll's Plat, notes that a bearing tree was standing at this corner and that the corner was 5254.2' South of the SW corner of the plat.

1979 - Robert Mick, P.S. 16936, in Ontonagon County Airport Survey Map on file with plats at Ontonagon Co. Register of Deeds, notes that he found a square wooden stake at this corner, at the intersection of an old fence and REA powerline. He also noted that the testimony of long time residents identify this as the section corner. No witnesses were established.

B. Description of corner evidence found and/or method applied in restoring or reestablishing corner:

I found no remains of original corner or accessories. Corner falls in creek bottom in logged over area. I found no remains of wooden stake called for in Bob Mick Survey. I recreated the position of this corner from other corners found on his survey map, and this fell, as he noted, at the intersection of the old fence and powerline. The distance North to plat corner works well with Donnelly and GLO (5255.25'). Distance East to creek crossing works well with GLO (92' measured, 85.8' GLO). This position also works well with corners to East and West. I accepted Bob Mick's position for this corner and monumented it as the section corner.

Research on file with County Remonumentation Representative.

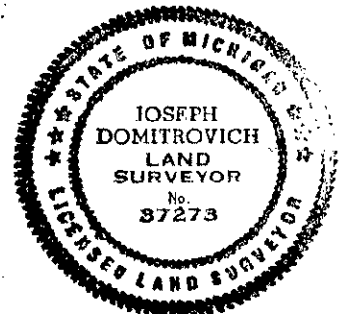
C. Description of monument for corner and accessories established to perpetuate locating the position of the corner:

Corner is a 2" x 30' aluminum pipe with a 3" diameter aluminum cap stamped to read: S. 4, S. 3, S. 9, S. 10; T.51N, R.40W; 1996; P.S. 37273.

Witnesses:

- 4" Triple Elm N 23° W 18.27'
- 4" Soft Maple N 14° E 15.77'
- 6" Elm S 47° E 32.70'
- 4" Hard Maple S 06° E 35.79'
- Steel Sign Post West 0.97'

SEER GROUP
Carl W. Applekamp
 COUNTY REPRESENTATIVE
 9-12-96



NOTE: Bearings are magnetic. Distances are to nail in side of witness objects unless noted.

Signed by Joseph C. Domitrovich

Date 9/12/96

Surveyor's Michigan License No. 37273