

LAND CORNER RECORDATION CERTIFICATE
 Filing Requirement of Act 74, Mich. P.A. 1970

For corners in Ontonagon Located In: _____ Corner Code # _____
 (County)

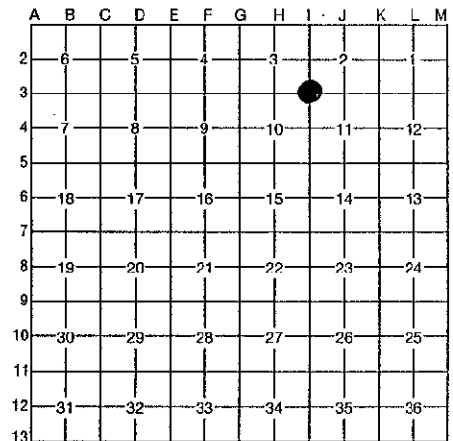
1. Public Land Survey	T	51N	R	40W	I-3
	T	_____	R	_____	_____
	T	_____	R	_____	_____
	T	_____	R	_____	_____
2. Property Controlling in Section	S	_____	T	_____	R
	S	_____	T	_____	R
3. Miscellaneous Property in Section	S	_____	T	_____	R
	S	_____	T	_____	R

SURVEY & REMONUMENTATION

MAY 22 1997

COMMISSION
 Register of Deeds Stamp & File Number

4. Lot No. _____, Recorded Plat _____
 5. Private Claims _____



I, Joseph C. Domitrovich, in a field survey on August 30, 19 96, do hereby certify that under requirements of P.A. 74, Michigan P.A. of 1970, the corner points mentioned in lines 1 and 2 above were in conformance with regulations and rules therefore as required in the current manual of survey instructions of the United States Department of the Interior, Bureau of Land Management or by a decree of a Court of Law and/or that the corner points mentioned in lines 3, 4 and 5 above were in conformance with the rules of the Michigan Board of Professional Surveyors or by a Decree of a Court of Law; established, re-established, monumented, re-monumented, recovered, found as expressed below:

NOTE: Not more than 4 corners, all in the same town and range, may be recorded on this certificate.

A. Description of original monument and accessories and/or subsequent restoration:

(I-3) Corner of Sections 2, 3, 10, & 11, T51N, R40W

1845 - William A. Burt set sugar post

- 16" Sugar S 5⁰ 30' E 25 links
- 12" Y. Birch N 22⁰ W 12 links

1979 - Robert Mick, P.S. 16936, on Ontonagon County Airport Survey Map on file with plats at Ontonagon Co. Register of Deeds, notes that he re-established this corner from old buried fence line built before 1926, REA Powerline and testimony of long time residents. He set a concrete monument and established three witnesses.

B. Description of corner evidence found and/or method applied in restoring or reestablishing corner:

The original corner and its accessories have been destroyed by road construction and farming. I found a 6" diameter concrete monument with a 1/2" iron in it. It fell 4' North of an East-West gravel road and on the extension of a powerline to the west. I also found two of Bob Mick's witnesses. This monument works well with other corners to North, East and West.

I accepted the concrete monument as the Section corner and placed a 2" stamped aluminum cap on it.

Research on file with County Remonumentation Representative.

PEER GROUP APPROVED
Earl W. Applecamp
 COUNTY CLERK
 9-12-96

C. Description of monument for corner and accessories established to perpetuate locating the position of the corner:

Corner is a 1/2" iron encased in a 6" diameter concrete monument with a 2" diameter aluminum cap stamped to read: S. 2, S.3, S. 10, S. 11; T.51N, R.40W; 1996; P.S. 37273. I also established a reference monument (R.M.), a 3/4" x 48" aluminum rod with a 3" diameter aluminum cap stamped to indicate that the section corner is North 40.26'. R.M. falls 1' North of East-West fence.

Witnesses:

- 7" Cherry Tree N 03⁰ E 43.28'
- 24" White Pine N 82⁰ E 73.02' (existing P.K.)
- 8" White Pine S 65⁰ E 74.92'
- R.M. South 40.26'
- 8" Triple Apple Tree S 22⁰ W 53.80' (existing)

NOTE: Bearings are magnetic. Distances are to nail in side of witness objects unless noted.

Signed by J. C. Domitrovich

Date 9/12/96

Surveyor's Michigan License No. 37273

