

✓
MICHIGAN
DEPARTMENT OF CONSERVATION
FORESTRY DIVISION

LAND CORNER RECORD

T. 51 N.R. 41W

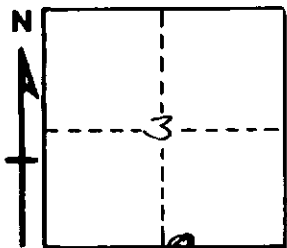
Ontonagon COUNTY

DESCRIPTION OF CORNER On Line between Sections 3-10, on West side of Day.

CORNER MONUMENT 1" Pipe with 4" Aluminum Cap.

DATE MONUMENT PLACED AND WITNESSED 9/20/65

WITNESSES TO CORNER..... 12" Y. Birch (S 3 BT) N46°E 16.5'



12" Soft Maple (S 10 BT) S55°W 53.5'

AND

CIRCLE CORNER REGISTERED

DESCRIPTION IN DETAIL AS TO HOW CORNER WAS LOCATED AND IDENTIFIED OR RESTORED.

This Corner placed on the East-West Section Line.

Note: This is not a Quarter Corner,
This monument lies 2179.25' West
of Section Corner $\frac{3}{10} \frac{2}{11}$

SURVEYOR'S SEAL

Billy D. Buckler
SIGNED Billy D. Buckler DATE 2/28/68
REGISTERED LAND SURVEYOR