

MICHIGAN
DEPARTMENT OF CONSERVATION
FORESTRY DIVISION

LAND CORNER RECORD

T. 51N N.R. 41W

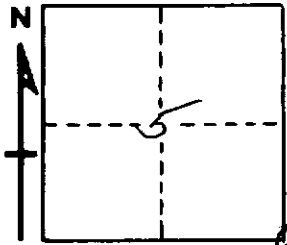
Ontonagon COUNTY

DESCRIPTION OF CORNER Section Corner's common to Sections 4-5-8-9

CORNER MONUMENT 1" pipe with 4" aluminum cap.

DATE MONUMENT PLACED AND WITNESSED 9/15/65

WITNESSES TO CORNER..... 8" B. Ash (S8 NBT) S45°W 31.8'



8" B. Ash (S9 NBT) S55°E 8.3'

AND

DESCRIPTION IN DETAIL AS TO HOW CORNER WAS LOCATED AND IDENTIFIED OR RESTORED.

Corner replaced at $1\frac{1}{4}$ " from pipe. This pipe possibly set by Pete Myren, Timber Cruiser for the Greenwood Lumber Company.

Found no evidence of Original Corner.

Corner lies 81.0' North of Centerline of M-64.

SURVEYOR'S SEAL

SIGNED Billy D. Buckler DATE 2/28/68
REGISTERED LAND SURVEYOR