

LAND CORNER RECORDATION CERTIFICATE  
Filing Requirement of Act 74, Mich. P.A. 1970

For corners in  
Ontonagon

(County)

Located In:

Corner Code #

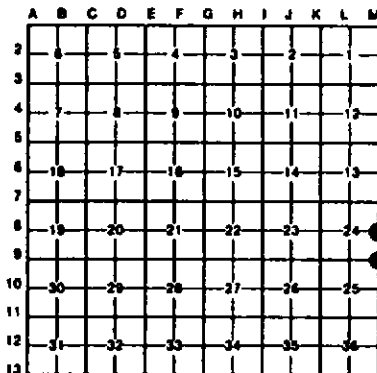
1. Public Land Survey	T	51N	R	40W	M9
	T	51N	R	40W	M8
	T		R		
	T		R		
2. Property Controlling in Section	S		T	R	
	S		T	R	
3. Miscellaneous Property in Sec.	S		T	R	
	S		T	R	

Register of Deeds Stamp & File Number

4. Lot No. \_\_\_\_\_, Recorded Plat \_\_\_\_\_  
5. Private Claims \_\_\_\_\_

I, Stephan J. Szyszkoski, in a field survey on February 28, 1994, 19\_\_\_\_\_, do hereby certify that under requirements of P.A. 74, Michigan P.A. of 1970, the corner points mentioned in lines 1 and 2 above were in conformance with regulations and rules therefore as required in the current manual of survey instructions of the United States Department of the Interior, Bureau of Land Management or by a decree of a Court of Law and/or that the corner points mentioned in lines 3, 4 and 5 above were in conformance with the rules of the Michigan Board of Land Surveyors or by a Decree of a Court of Law; established, re-established, monumented, re-monumented, recovered, found as expressed below:

NOTE: Not more than 4 corners, all in the same town and range, may be recorded on this certificate.



A. Description of original monument and accessories and/or subsequent restoration:

(M9) Section corner common to Sections 24-25 T51N-R40W, and Sections 19-30 T51N-R39W. Corner previously reestablished and recorded in 1976 by Kieth L. Sackett, RLS as follows: Set 1" I.D.x36" iron pipe with 4" aluminum cap and the following NBTs - 6" Y. Birch N70W 22.1' S24 NBT, 10" elm N59E 24.3' S19 NBT, 14" Sugar S03E 4.5' S30 NBT, 4" Balsam S52E 4.5' squared. Found no subsequent record.  
(M8) Quarter corner common to Section 24 T51N-R40W, and Section 19 T51N-R39W. Corner previously reestablished and recorded in 1976 by Kieth L. Sackett, RLS as follows: Placed 1" I.D.x36" iron pipe with 4" aluminum cap with NBTs - 3" Maple N53W 15.6', 8" Maple N66E 14.4', 4" Maple S35W 23.8', 2" squared maple West 3.0'. Found no subsequent record.

B. Description of corner evidence found and/or method applied in restoring or reestablishing corner:

(M9) This corner is being rerecorded to update the accessories. No measurements were made to adjacent corners at this time. Found the monument as described above, undisturbed. The 1976 NBTs were found as follows: 6" Y. Birch N68W 22.1' S24 NBT, 17" Sugar S03W 4.5' S30 NBT, the elm NBT was found at record bearing and distance but is now a dead stub with marks plain, the balsam was not recovered. The two remaining NBTs are in good condition. Marked two new witnesses as described below.  
(M8) This corner is being rerecorded to update the accessories. No measurements to adjacent corners were made at this time. Found monument as described above, undisturbed. Recovered the following 1976 NBTs: 4" Maple N53W 15.6' marked 1/4S NBT in good condition, 11" Maple N66E 14.4' marked 1/4S NBT in good condition, 4" Maple S35W 23.8' Marked 1/4S NBT dead but standing, 2" squared maple West 3.0' dead but standing. Marked two new witness trees as described below.

C. Description of monument for corner and accessories established to perpetuate locating the position of the corner:

(M9) Found 1" pipe with 4" MDNR cap. Blazed and scribed the following new bearing trees: 10" Sugar with location poster S85W 4.0' "S25 NBT" 5" Sugar S80E 22.0' "S30 NBT" Bearings are magnetic.	(M8) Found 1" pipe with 4" MDNR cap. Blazed and scribed the following new bearing trees: 4" Maple S39E 22.9' "1/4S NBT" 11" Balsam S06W 26.8' "1/4S NBT" Bearings are magnetic.
---	---



Signed by Stephan J. Szyszkoski Date 3-7-94  
Surveyor's Michigan License No. 33986