

LAND CORNER RECORDATION CERTIFICATE
Filing Requirement of Act 74, Mich. P.A. 1970

For corners in Ontonagon (County)	Located In:	Corner Code --#
1. Public Land Survey	T _____ R _____	_____
	T _____ R _____	_____
	T _____ R _____	_____
	T _____ R _____	_____
2. Property Controlling in Section	S <u>23</u> T <u>51N</u> R <u>40W</u>	<u>13</u>
	S <u>23</u> T <u>51N</u> R <u>40W</u>	<u>16</u>
3. Miscellaneous Property in Sec.	S <u>23</u> T <u>51N</u> R <u>40W</u>	<u>11</u>
	S _____ T _____ R _____	_____

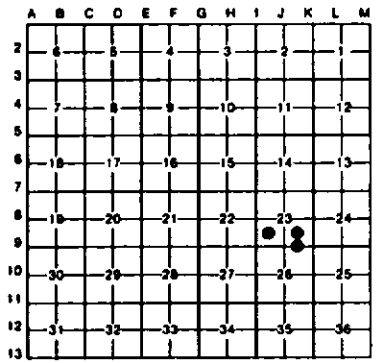
Register of Deeds Stamp & File Number

4. Lot No. _____, Recorded Plat _____
5. Private Claims _____

11 September 01, 1994
16 September 01, 1994

I, Stephan J. Szyszkoski, in a field survey on 13 August 25, 1994, 19 _____, do hereby certify that under requirements of P.A. 74, Michigan P.A. of 1970, the corner points mentioned in lines 1 and 2 above were in conformance with regulations and rules therefore as required in the current manual of survey instructions of the United States Department of the Interior, Bureau of Land Management or by a decree of a Court of Law and/or that the corner points mentioned in lines 3, 4 and 5 above were in conformance with the rules of the Michigan Board of Land Surveyors or by a Decree of a Court of Law, established, re-established, monumented, re-monumented, recovered, found as expressed below:

NOTE: Not more than 4 corners, all in the same town and range, may be recorded on this certificate.



A. Description of original monument and accessories and/or subsequent restoration:
(13-Sec. 23) Southeast 1/16 corner, Section 23. Corner not established in the original survey. Found no subsequent record.
(16-Sec. 23) East 1/16 corner between Sections 23-26. Corner not established in the original survey. Found no subsequent record.
(11-Sec. 23) Corner not established in the original survey. Found no subsequent record.

B. Description of corner evidence found and/or method applied in restoring or reestablishing corner:
(13-Sec. 23) Found no evidence of prior monumentation at the corner position. Established the corner at the intersection of straight lines connecting opposite 1/16 corners. The 1/16 corners west and south are monumented, those north and east are unmonumented positions computed as midway and on a straight line between appropriate section/quarter corners. At the position for the corner, I placed a 1" I.D. x 32" iron pipe capped with a 4" dia. cast aluminum MDNR tablet, appropriately stamped.
(16-Sec. 23) Found no evidence of monumentation at the corner position. Established the corner midway and on a straight line between monumented 1/4 and section corners 1323.21' West and East. At the position for the corner, I placed a 1" I.D. x 32" iron pipe capped with a 4" cast aluminum MDNR tablet, appropriately stamped.
(11-Sec. 23) Found no evidence of prior monumentation at the corner position. Established the corner at the intersection of straight lines connecting opposite 1/16 corners. The 1/16 corners east and north being monumented, those south and west being unmonumented computed positions midway and on a straight line between respective 1/4 and section corners. At the position for the corner, I placed a 1" I.D. x 32" iron pipe capped with a 4" cast aluminum MDNR tablet, appropriately stamped.

C. Description of monument for corner and accessories established to perpetuate locating the position of the corner:
(13) Set 1" iron pipe with 4" MDNR cap. Blazed and scribed the following bearing trees:
3" Y. Birch East 17.5' 1/16S BT"
8" Sugar S22E 23.6' 1/16S BT"
7" Sugar S42W 26.1' 1/16S BT"
7" Sugar N43W 33.4' 1/16S BT"
Monument is on a steep north facing slope about 25' north of the crest. Set a squared Y. Birch post 1 ft. east. Bearings are magnetic, distances measured along the slope.
(16) Set 1" iron pipe with 4" MDNR cap. Blazed and scribed the following bearing trees:
5" Maple N88E 35.5' 1/16S BT"
5" Maple S67E 35.0' 1/16S BT"
5" Maple S19W 14.9' 1/16S BT"
4" Maple N44W 46.9' 1/16S BT"
Set metal sign post with location poster affixed 0.4' north of the monument. Bearings are magnetic. An old road bed extends north and west from the corner.
(11) Set 1" iron pipe with 4" MDNR cap. Blazed and scribed the following bearing trees:
5" Maple S18E 39.0' 1/16S BT"
7" Oak S51W 13.3' 1/16S BT"
6" Maple N57W 5.4' 1/16S BT"
6" maple N32E 32.3' 1/16S BT"
Fence corner post S85E 15.6', fence runs N, N, 85 and is 3.1' South of the corner. Bearings are magnetic.

Signed by Stephan J. Szyszkoski Date 10-5-94
Surveyor's Michigan License No. 33986

