

LAND CORNER RECORDATION CERTIFICATE
Filing Requirement of Act 74, Mich. P.A. 1970

For corners in
Ontonagon

(County)	Located In:	Corner Code #
1. Public Land Survey	T 51N R 40W	J8
	T R	
	T R	
	T R	
2. Property Controlling in Section	S 23 T 51N R 40W	8
	S 23 T 51N R 40W	12
3. Miscellaneous Property in Sec.	S T R	
	S T R	

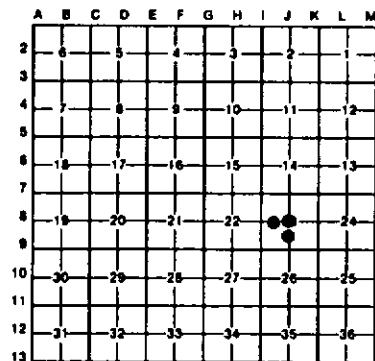
Register of Deeds Stamp & File Number

4. Lot No. _____, Recorded Plat _____
5. Private Claims _____

12 August 25, 1994
8 September 01, 1994

I, Stephan J. Szyszkoski, in a field survey on J8 August 25, 1994, 19_____, do hereby certify that under requirements of P.A. 74, Michigan P.A. of 1970, the corner points mentioned in lines 1 and 2 above were in conformance with regulations and rules therefore as required in the current manual of survey instructions of the United States Department of the Interior, Bureau of Land Management or by a decree of a Court of Law and/or that the corner points mentioned in lines 3, 4 and 5 above were in conformance with the rules of the Michigan Board of Land Surveyors or by a Decree of a Court of Law, established, re-established, monumented, re-monumented, recovered, found as expressed below:

NOTE: Not more than 4 corners, all in the same town and range, may be recorded on this certificate.



A. Description of original monument and accessories and/or subsequent restoration:

- (J8) Center of Section 23. Corner not established in the original survey. Found no subsequent record.
- (8-Sec. 23) West 1/16 corner. Corner not established in the original survey. Found no subsequent record.
- (12-Sec. 23) South 1/16 Corner, Section 23. Corner not established in the original survey. Found no subsequent record.

B. Description of corner evidence found and/or method applied in restoring or reestablishing corner:

- (J8) Found no evidence of prior monumentation at the corner position. Established the corner at the intersection of straight lines connecting opposite 1/4 corners 2623.52' north, 2649.28' east, 2629.93' south, and 2612.40' west. At the position for the corner, I placed a 1" I.D. x 32" iron pipe capped with a 4" dia. cast aluminum MDNR tablet, appropriately stamped.
- (8-Sec. 23) Found no evidence of prior monumentation at the corner position. Established the corner midway and on a straight line between 1/4 corner and center of section 1306.20' west and east. At the position for the corner I placed 1" I.D. x 32" iron pipe capped with a 4" cast aluminum MDNR tablet, appropriately stamped.
- (12-Sec. 23) Found no evidence of prior monumentation at the corner position. Established the corner midway and on a straight line between Center of Section and 1/4 corner 1314.97' north and south. At the position for the corner, I placed a 1" I.D. x 32" iron pipe capped with a 4" cast aluminum MDNR tablet, appropriately stamped.

C. Description of monument for corner and accessories established to perpetuate locating the position of the corner:

- | | | |
|--|---|---|
| (J8) Set 1" iron pipe with 4" MDNR cap.
Blazed and scribed the following bearing trees:
4" Maple S67N 11.9' 1/4S BT"
4" Maple N10E 14.0' 1/4S BT"
6" Balsam S34E 17.2' 1/4S BT"
8" Balsam N85W 12.7' 1/4S BT"
Bearings are magnetic. | (8) Set 1" iron pipe with 4" MDNR cap.
Blazed and scribed the following bearing trees:
7" Maple N70E 30.1' 1/16S BT"
6" Double Maple S61E 38.8' 1/16S BT"
8" Ash S24W 20.4' 1/16S BT"
3" Maple N49W 14.9' 1/16S BT"
Corner is in low land. Bearings are magnetic. | (12) Set 1" iron pipe with 4" MDNR cap.
Corner falls in low, open land. No trees available for witnesses. Corner is 230' west of old N-S railroad grade on the extension of a 4' wide cut traverse line. |
|--|---|---|

Signed by Stephan J. Szyszkoski Date 10-5-94
Surveyor's Michigan License No. 33986

