

MICHIGAN
DEPARTMENT OF CONSERVATION
FORESTRY DIVISION

LAND CORNER RECORD

T. 53 N.R. 37W

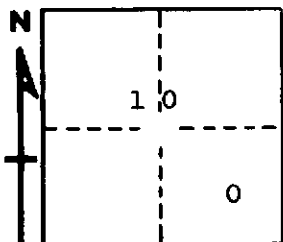
Ontonagon COUNTY

DESCRIPTION OF CORNER NE corner of the West 400.00' parcel of Lot 1 of Section 10

CORNER MONUMENT 1" iron pipe with 4" aluminum cap

DATE MONUMENT PLACED AND WITNESSED 11/16/67, F. J. Bray

WITNESSES TO CORNER..... 18" White Birch (BT) S 33° W, 21½ links



6" Soft Maple (BT) N 71° E, 11½ links

10" White Birch (BT) S 38° E, 44 links

AND

CIRCLE CORNER REGISTERED

DESCRIPTION IN DETAIL AS TO HOW CORNER WAS LOCATED AND IDENTIFIED OR RESTORED.

Placed 400.00' East of line between lots 1 and 2 and N 0° 37' E 1211.73 feet from SE corner of the West 400.00' parcel of Lot 1

SURVEYOR'S SEAL

SIGNED Frank J. Bray DATE 12/12/67
REGISTERED LAND SURVEYOR