

✓
MICHIGAN
DEPARTMENT OF CONSERVATION
FORESTRY DIVISION

LAND CORNER RECORD

T. 53 N.R. 37 W

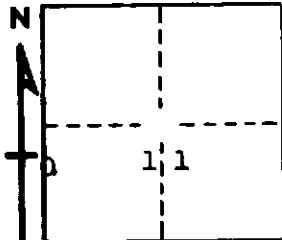
Ontonagon COUNTY

DESCRIPTION OF CORNER Meander corner between section 10/11

CORNER MONUMENT 3/4" iron pipe set on sand beach

DATE MONUMENT PLACED AND WITNESSED 11/16/67, F. J. Bray

WITNESSES TO CORNER..... 10" White Birch (NBT) S 88° E, 80 links



7" Yellow Birch (NBT) S 08° E, 91 links

AND

CIRCLE CORNER REGISTERED

DESCRIPTION IN DETAIL AS TO HOW CORNER WAS LOCATED AND IDENTIFIED OR RESTORED.

Rewitnessed as set by Registered Land Surveyor Edward Charles.

SURVEYOR'S SEAL

SIGNED Frank J. Bray DATE 12/12/67
Frank J. Bray
REGISTERED LAND SURVEYOR