

LAND CORNER RECORDATION CERTIFICATE

Filing Requirement of Act 74, Mich. PA 1970

For Corners In:
Presque Isle Located In _____ Corner Code # _____
 (County)

1. Public Land Survey	T	33N	R	2E	E-9
	T	33N	R	2E	E-10
2. Property Controlling in Section	S	T	R	_____	_____
	S	T	R	_____	_____
3. Miscellaneous Property in Section	S	T	R	_____	_____
	S	T	R	_____	_____

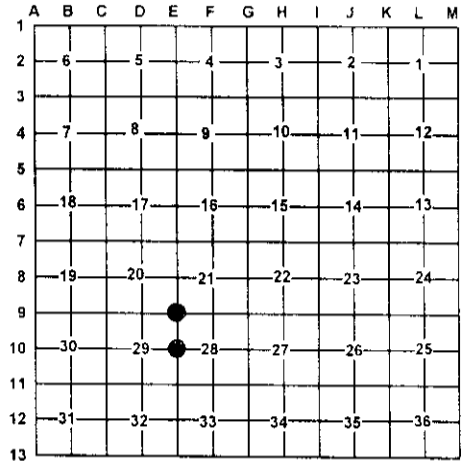
4. Lot No: _____ Recorded Plat: _____

5. Private Claims: _____

I, Carl T. Kiiskila, in a field survey on August 6, 2002 do hereby state that under requirements of PA 74, Michigan PA of 1970, the corner points mentioned in lines 1 and 2 above were in conformance with regulations and rules therefore as required in the current manual of survey instructions of the United States Department of the Interior, Bureau of Land Management or by a decree of a Court of Law and/or that the corner points mentioned in lines 3, 4 and 5 above were in conformance with the rules of the Michigan Board of Land Surveyors or by a Decree of a Court of Law, established, re-established, monumented, recovered, found as expressed below:

NOTE: Not more than 2 corners, all in the same town and range, may be recorded on this certificate.

Register of Deeds Stamp & File Number



A. Description of original monument and accessories and/or subsequent restoration:

E-9 G.L.O. G.H. Cannon, September 1851, Set post for corner sections 20,21,28, and 29.
 Wit: Yellow Pine 16 S35°E 30 links
 White Pine 30 N43°W 62 links

Michigan Department of Conservation surveyor Marcus Schaaf R.L.S. #3104 sunk iron for corner while surveying in the area circa 1940. No witnesses or type of monument given.

Perla Stout Associates, P.C. Found 1 1/2" pipe for the corner while surveying in the area in 1978 Wit: N50°W 10" Oak 20.10', S71°W 6" Oak 29.60', S20°E 6" Oak 25.92'

Page 373 Presque Isle Corner Records Delmer E. Porter R.L.S. #15410 found a 1" pipe for corner set a concrete monument with a brass cap. Wit: N46°W 20.29' 9" Oak, S71°W 29.63' 4" Oak, S15°E 25.83' 4" Oak.

E-10 G.L.O. G. H. Cannon, September 1851, Set quarter section post
 Wit: Yellow Pine 18 N32°E 72 links
 White Pine 18 S84°W 34 links

Michigan Department of Conservation surveyor Marcus Schaaf R.L.S. #3104 sunk iron for corner while surveying in the area circa 1940. No witnesses or type of monument given.

Perla Stout Associates, P.C. Found 1 1/2" pipe for the corner while surveying in the area in 1978 Wit: S45°W 3" J. Pine 46.03', S78°E 12" J. Pine 33.78', N44°W 4" Oak 9.78'

Page 617 Presque Isle Corner Records Ronald R. Bischer R.L.S. #22428 found 2 1/2" pipe raised with 1/2" rod and P.S. cap #15410
 Wit: N44°W 9.78' 4" Oak, S78°E 33.78' 12" J. Pine, S45°W 46.03' 3" J. Pine.

B. Description of corner evidence found and/or method applies in restoring or re-establishing corner:

E-9 Found Presque Isle Co. remon. Monument.

E-10 Found 2" pipe with 1/2" capped iron rod W/ P.S. cap #12581 (Louis J. Czubak).

C. Description of monument for corner and accessories established to perpetuate locating the position of the corner:

E-9 Found Presque Isle Co. remon. Monument.
 Wit: 11" Oak N46°W 20.03'
 9" Red Pine N33°E 17.47'
 5" Oak S17°E 25.87'
 9" Oak S54°W 30.94'
 East-West two track South 15'±
 Blue Carsonite Post North 1'±

E-10 Found 2" pipe with 1/2" capped iron rod W/ P.S. cap #12581
 Wit: 20" Scotch Pine S74°E 33.90'
 11" Oak S10°E 62.83'
 7" Jack Pine S51°W 46.04'
 5" Oak N33°W 9.90'
 Blue Carsonite Post North 1'±

Signed by: Carl T. Kiiskila
 Surveyor's Michigan License No.: 33981

Date: 8-26-02

