

# LAND CORNER RECORDATION CERTIFICATE

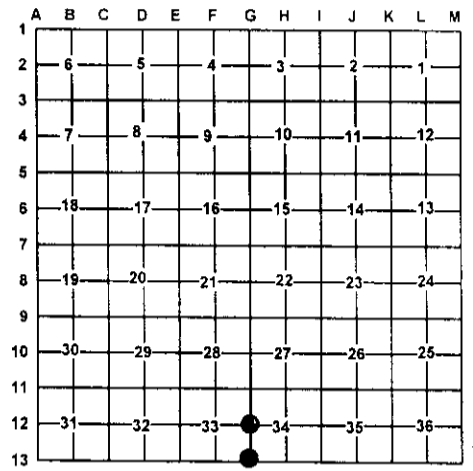
Filing Requirement of Act 74, Mich. PA 1970

For Corners In: Presque Isle (County)	Located In	Corner Code #	
1. Public Land Survey	T <u>33N</u> R <u>4E</u>	<u>G-12</u>	
	T <u>33N</u> R <u>4E</u>	<u>G-13</u>	
2. Property Controlling in Section	S _____ T _____ R _____	_____	
	S _____ T _____ R _____	_____	
3. Miscellaneous Property in Section	S _____ T _____ R _____	_____	
	S _____ T _____ R _____	_____	
4. Lot No: _____	Recorded Plat: _____		
5. Private Claims: _____			

Register of Deeds Stamp & File Number

I, Carl T. Kiiskila, in a field survey on April 9, 2002 do hereby state that under requirements of PA 74, Michigan PA of 1970, the corner points mentioned in lines 1 and 2 above were in conformance with regulations and rules therefore as required in the current manual of survey instructions of the United States Department of the Interior, Bureau of Land Management or by a decree of a Court of Law and/or that the corner points mentioned in lines 3, 4 and 5 above were in conformance with the rules of the Michigan Board of Land Surveyors or by a Decree of a Court of Law, established, re-established, monumented, recovered, found as expressed below:

**NOTE: Not more than 2 corners, all in the same town and range, may be recorded on this certificate.**



**A. Description of original monument and accessories and/or subsequent restoration:**

G-12 G.L.O. Alfred Millerd 1855 set quarter section post  
wit: Spruce Pine 10 N55°E 50 links  
Spruce Pine 10 S75°W 4 links

Page 627, Presque Isle County Land Corner Records,  
Ronald R. Bischer P.S. #22428 set a 1/2" rod by single  
proportion. Wit: N24°W 13.45' 10" Oak  
S47°E 22.40' 11" Oak  
S72°W 1.88' 8" J. Pine

G-13 G.L.O. John Hodgson 1840 set post corner  
Wit: Pine 24 N49°W 50 links  
Pine 24 N78°E 15 links

Page 627, Presque Isle County Land Corner Records,  
Ronald R. Bischer P.S. #22428, set a 1/2" rod by single  
proportion. Wit: East 63.08' 7" J. Pine  
N27°W 87.57' 6" J. Pine  
N60°W 39.89' Fence Corner

**B. Description of corner evidence found and/or method applies in restoring or re-establishing corner:**

G-12 Found 1/2" capped iron R. Bischer P.S. #22428

G-13 Found 1/2" iron rod with P.S. cap Porter P.S. #15410

**C. Description of monument for corner and accessories established to perpetuate locating the position of the corner:**

G-12 Found 1/2" capped iron rod P.S. #24598, placed  
1" X 48" pipe with standard DNR monument cap  
over top.  
Wit: \*16" Oak clump N25°W 13.57'  
\*20" Twin Oak S44°E 22.42'  
5" Jack Pine S69°W 68.82'  
Carsonite Post North 1'±

G-13 Replaced found 1/2" iron rod with 5/8" X 32" rerod  
with P.S. cap #33981  
Wit: \*10" Jack Pine w/ tag #15410 East 62.97'  
8" Jack Pine S40°E 82.20'  
\*8" Poplar w/ tag #41922 N08°W 74.89'  
\*8" Jack Pine N28°W 87.82'  
4" Maple clump N80°W 42.15'  
capped iron rod #18660 N85°W 33.17'

\* witnesses by other

Signed by: Carl T. Kiiskila  
Surveyor's Michigan License No.: 33981

Date: 8-26-02

