

# LAND CORNER RECORDATION CERTIFICATE

Filing Requirement of Act 74, Mich. PA 1970

|                                      |                         |               |                |
|--------------------------------------|-------------------------|---------------|----------------|
| For Corners In:                      |                         |               |                |
| Presque Isle                         | Located In              | Corner Code # |                |
| (County)                             |                         |               |                |
| 1. Public Land Survey                | T _____                 |               |                |
|                                      | T _____ R _____         |               |                |
| 2. Property Controlling in Section   | S 13 T 33N R 8E         |               | MC East of K-7 |
|                                      | S 26 T 33N R 8E         |               | 10             |
| 3. Miscellaneous Property in Section | S _____ T _____ R _____ |               |                |
|                                      | S _____ T _____ R _____ |               |                |

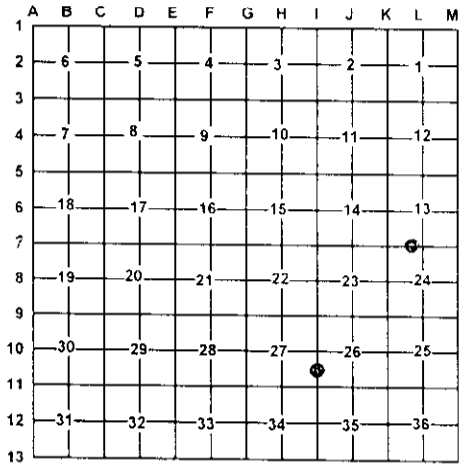
Register of Deeds Stamp & File Number

4. Lot No: \_\_\_\_\_ Recorded Plat: \_\_\_\_\_

5. Private Claims: \_\_\_\_\_

I, Carl T. Kiiskila, in a field survey on January 19, 2000 do hereby state that under requirements of PA 74, Michigan PA of 1970, the corner points mentioned in lines 1 and 2 above were in conformance with regulations and rules therefore as required in the current manual of survey instructions of the United States Department of the Interior, Bureau of Land Management and by a decree of a Court of Law and/or that the corner points mentioned in lines 3, 4 and 5 above were in a Court of Law; established, re-established, monumented, recovered, found as expressed below:

**NOTE: Not more than 2 corners, all in the same town and range, may be recorded on this certificate.**



**A. Description of original monument and accessories and/or subsequent restoration:**

MC East of K-7 G.L.O. Josiah Knauer D.S. July 1855  
 Set Meander Post  
 Wit: Cedar 7 S59°W 16 Links  
 Poplar 9 N66.5°W 10 Links  
 The original meander corner 36.40 chains East of the Southwest corner of section 13 and its accessories were not recovered.

10- This corner position was not established during the original government survey.

**B. Description of corner evidence found and/or method applies in restoring or re-establishing corner:**

MC East of K-7 Established a witness corner on the section line between 13 and 24 35.68 chains (2355.06 feet) East of the Southwest corner of section 13 using topographic features called out in the G.L.O. notes.

10- Established the Southwest corner of the Northwest quarter of the Southwest quarter of section 26 as per B.L.M. instructions for the subdivision of a section.

**C. Description of monument for corner and accessories established to perpetuate locating the position of the corner:**

MC East of K-7 Set 5/8" X 32" Rerod with P.S. Cap #33981  
 Wit: 5" Cedar S29°E 12.42'  
 3" Cedar N71°W 13.65'  
 6" R. Pine N60°W 19.78'  
 6" Cedar North 20.35'  
 Water edge East 240' ±

10- Set 5/8" X 32" Rerod with P.S. cap #33981  
 Wit: 7" Cedar N72°E 38.73'  
 5" Spruce S39°E 42.94'  
 5" Spruce N58°W 47.68'  
 10" Cedar S71°W 57.15'  
 Carsonite post East 33'

Signed by: Carl T. Kiiskila  
 Surveyor's Michigan License No.: 33981

Date: 11-18-03

