

97 DEC 23 AM 11:17

LAND CORNER RECORDATION CERTIFICATE
Filing Requirement of Act 74, Mich. P.A. 1970

For corners in

Presque Isle (County)	Located In:	Corner Code #
1. Public Land Survey	T 34N R 5E	L-1
	T R	
	T R	
	T R	
2. Property Controlling in Section	S T R	
	S T R	
3. Miscellaneous Property in Sec.	S T R	
	S T R	

Levit M. Lamb
REGISTER OF DEEDS

Register of Deeds Stamp & File Number

4. Lot No. _____, Recorded Plat _____
5. Private Claims _____

Delmer E. Porter, in a field survey on 11-5, 19 97 do hereby state that under requirements of P.A. 74, Michigan P.A. of 1970, the corner points mentioned in lines 1 and 2 above were in conformance with regulations and rules therefore as required in the current manual of survey instructions of the United States Department of the Interior, Bureau of Land Management or by a decree of a Court of Law and /or that the corner points mentioned in lines 3, 4 and 5 above were in conformance with the rules of the Michigan Board of Land Surveyors or by a Decree of a Court of Law, established, re-established, monumented, recovered, found as expressed below:

NOTE: Not more than 2 corners, all in the same town and range, may be recorded on this certificate.

	A	B	C	D	E	F	G	H	I	J	K	L	M
1													
2	6			5			4			3		2	1
3													
4	7			8			9			10		11	12
5													
6	18			17			16			15		14	13
7													
8	19			20			21			22		23	24
9													
10	30			29			28			27		26	25
11													
12	31			32			33			34		35	36
13													

A. Description of original monument and accessories and/or subsequent restoration:

L-1
GLO Notes Set 1/4 Section Post 9/29/62
John Hodgson Cedar 7" N16°W 22 Lk. F. Spicer
1840 Cedar 7" N64°E 8 Lk. #7877

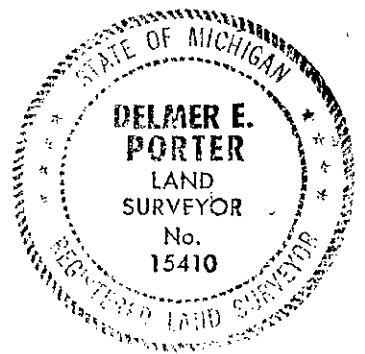
Cor Position will be on the floor of the MI Limestone Quarry Operations.

Field Notes from MI Limestone files indicate extensive survey work in Sec. 1, T34N, R5E & R6E. A theoretical retracement of Sec. 1, Given Existing Monumentation is presented & accepted by Mr. Spicer, as indicated by his survey.

B. Description of corner evidence found and/or method applied in restoring or reestablishing corner:

L-1
Nov. 5, 1997 Corner position falls in Quarry drainage Survey by ditch. Calculated position shown in Porter's Survey reference to accessory corners as shown in attached survey notes.

Ratified by Peer Group in accordance with P.A. 345
Chairman *Norman J. Quinn*
Date 12/4/97



C. Description of monument for corner and accessories established to perpetuate locating the position of the corner:

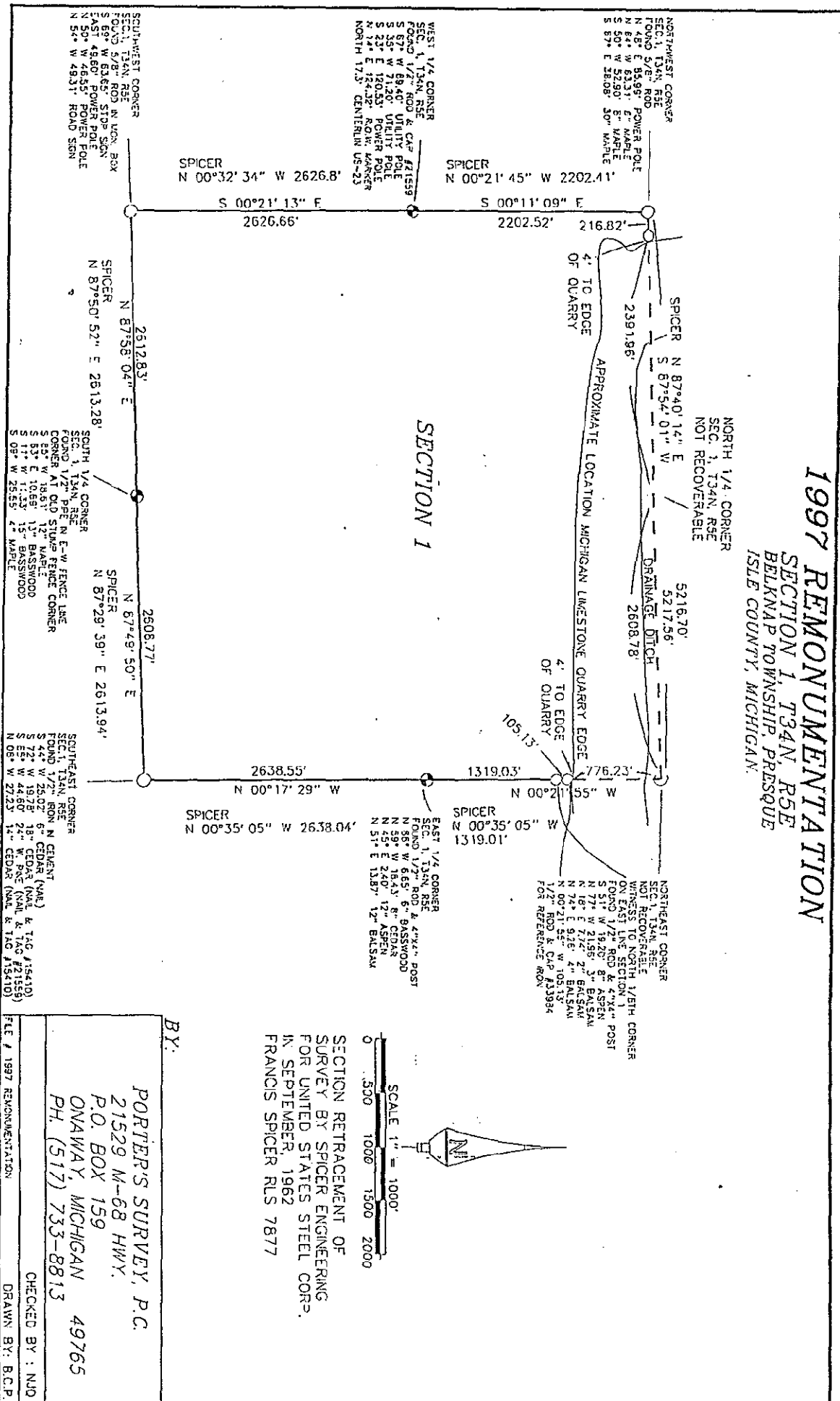
L-1
Witnesses to corner
S87°54'01"W 2391.96' 1/2" Rod & Cap #33984 at Quarry Top
S87°54'01"W 2608.78' 5/8" Rod for Northwest Cor. Sec 1
N87°54'01"E 2608.78' NE Corner of Section 1 position
S75°23'41"E 2699.20' 1/2" Rod & Cap #33984 at Quarry Top

SURVEY & REMONUMENTATION
JAN 14 1998
SECTION

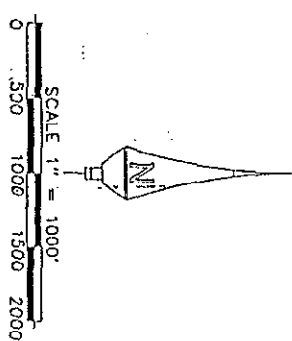
Signed by *Delmer E. Porter*
Surveyor's Michigan License No. 15410

Date 12/18/97

1997 REMONUMENTATION
SECTION 1, T34N, R5E
BELKNAP TOWNSHIP, PRESQUE
ISLE COUNTY, MICHIGAN.



SECTION 1



SECTION RETRACEMENT OF
 SURVEY BY SPICER ENGINEERING
 FOR UNITED STATES STEEL CORP.
 IN SEPTEMBER, 1962
 FRANCIS SPICER RLS 7877

BY:
 PORTER'S SURVEY, P.C.
 21529 M-68 HWY.
 P.O. BOX 159
 ONAWAY, MICHIGAN 49765
 PH. (517) 733-8813

CHECKED BY: NJD
 DRAWN BY: B.C.P.

FILE # 1997 REMONUMENTATION