

MICHIGAN
DEPARTMENT OF CONSERVATION
FORESTRY DIVISION

LAND CORNER RECORD

T. 35 N. R. 4 E

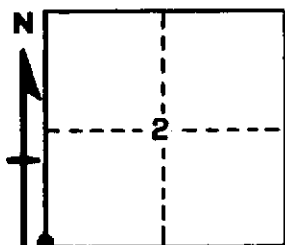
Presque Isle COUNTY

DESCRIPTION OF CORNER Section arner common to Sections 2-3-10-11

CORNER MONUMENT 1" pipe with 4" brass cap

DATE MONUMENT PLACED AND WITNESSED February 22, 1961

WITNESSES TO CORNER.....



| | | | | | |
|-----|-----------|---|------|---|-----------|
| | 7" Balsam | - | N60E | - | 21.7 feet |
| | 8" Balsam | - | S60W | - | 16.3 feet |
| AND | 6" Balsam | - | N36W | - | 9.8 feet |

DESCRIPTION IN DETAIL AS TO HOW CORNER WAS LOCATED AND IDENTIFIED OR RESTORED.

This corner was found by Forestry Division survey crew while making a survey in this area. Found 4" squared post at corner, set by unknown. Checks government bearing and distance to section corner north. Several Hemlock sites in vicinity but unable to positively identify government BTs. Considered best available evidence.

SURVEYOR'S SEAL

SIGNED Kenneth J. Ostling DATE 2-24-61
REGISTERED LAND SURVEYOR