

MICHIGAN  
DEPARTMENT OF CONSERVATION  
FORESTRY DIVISION

# LAND CORNER RECORD

T. 35 N.R. 4 E

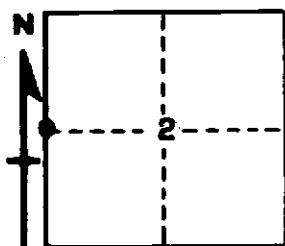
Presque Isle COUNTY

DESCRIPTION OF CORNER 1/4 corner common to Sections 2 and 3

CORNER MONUMENT 1" pipe with 4" brass cap

DATE MONUMENT PLACED AND WITNESSED February 22, 1961

WITNESSES TO CORNER.....



CIRCLE CORNER REGISTERED

8" Balsam	-	N75E	-	13.7 feet
7" Cedar	-	S4W	-	38.7 feet

AND

**DESCRIPTION IN DETAIL AS TO HOW CORNER WAS LOCATED AND IDENTIFIED OR RESTORED.**

This corner was established by proportionate measurement between section corners by Forestry Division survey crew while making a survey in this area. Found a squared, scribed post which checks exactly for latitude but falls 20 links east of true position. Nothing evident to support this location so concluded that post was erroneously placed, although intended to be on true line between section corners. Reset post at true corner, on line at proportionate distance between section corners.

**SURVEYOR'S SEAL**

SIGNED Kenneth J. Oetting DATE 2-24-61  
REGISTERED LAND SURVEYOR