

MICHIGAN
DEPARTMENT OF CONSERVATION
FORESTRY DIVISION

LAND CORNER RECORD

T. 35 N.R. 4 E

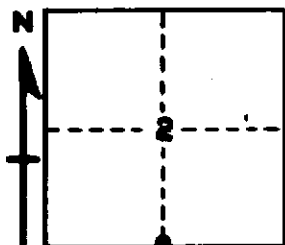
Presque Isle COUNTY

DESCRIPTION OF CORNER 1/4 corner common to Sections 2 and 11

CORNER MONUMENT 1" pipe with 4" brass cap

DATE MONUMENT PLACED AND WITNESSED February 21, 1961

WITNESSES TO CORNER.....



24" W. Pine stump - S71W - 59.6 feet

6" Cedar - N7E - 80.5 feet

AND

CIRCLE CORNER REGISTERED

DESCRIPTION IN DETAIL AS TO HOW CORNER WAS LOCATED AND IDENTIFIED OR RESTORED.

This corner was established by proportionate measurement between section corners, by Forestry Division survey crew while making a survey in this area. Corner falls in beaver flooding which has been inundated many times. Unable to identify original Bts.

SURVEYOR'S SEAL

SIGNED Kenneth J. Oetting DATE 2-24-61
REGISTERED LAND SURVEYOR