

MICHIGAN
DEPARTMENT OF CONSERVATION
FORESTRY DIVISION

LAND CORNER RECORD

T. 35 N.R. 4 E

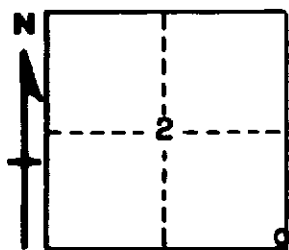
Presque Isle COUNTY

DESCRIPTION OF CORNER Section corner common to Sections 1-2-11-12

CORNER MONUMENT 1" pipe with 4" brass cap

DATE MONUMENT PLACED AND WITNESSED February 21, 1961

WITNESSES TO CORNER.....



CIRCLE CORNER REGISTERED

7" Balsam	-	N61W	-	33.0 feet
7" W. Birch	-	S52W	-	36.6 feet
AND 6" Balsam	-	S78E	-	8.9 feet

DESCRIPTION IN DETAIL AS TO HOW CORNER WAS LOCATED AND IDENTIFIED OR RESTORED.

This corner was established by double proportionate measurement between corners 1 mile north, 2 miles south, 1 mile east and 1 mile west, by Forestry Division survey crew while making a survey in this area. Unable to identify original BTs, although there are some Hemlock sites in this vicinity. Considered this the most equitable method of restoration.

SURVEYOR'S SEAL

SIGNED Kenneth J. Osting DATE 2-24-61
REGISTERED LAND SURVEYOR