

YEAR 2000 PRESQUE ISLE COUNTY, STATE OF MICHIGAN REMONUMENTATION

LAND CORNER RECORDATION CERTIFICATE
Filing Requirement of Act 74, Mich. P.A. 1970

PRESQUE ISLE COUNTY
RECORDED

For corners in
PRESQUE ISLE
(County)

Located In: Corner Code #

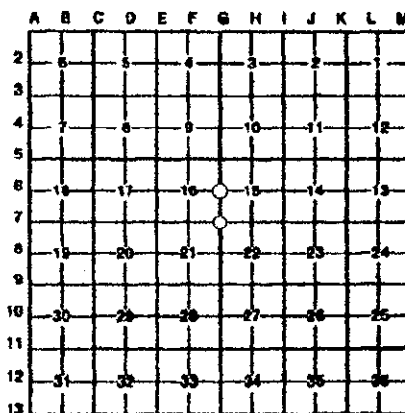
2000 DEC 11 AM 9:46

- | | | |
|------------------------------------|-------------------------|-------|
| 1. Public Land Survey | T 35N R 2E | G 6 ✓ |
| | T 35N R 2E | G 7 |
| | T _____ R _____ | _____ |
| | T _____ R _____ | _____ |
| 2. Property Controlling in Section | S _____ T _____ R _____ | _____ |
| | S _____ T _____ R _____ | _____ |
| 3. Miscellaneous Property in Sec. | S _____ T _____ R _____ | _____ |
| | S _____ T _____ R _____ | _____ |

Janet M. Lamb
REGISTER OF DEEDS

Register of Deeds Stamp & File Number

4. Lot No. _____, Recorded Plat _____
5. Private Claims _____



I, James A. Beck, in a field survey on Sep 24, 2000, do hereby certify that under requirements of P.A. 74, Michigan P.A. of 1970, the corner points mentioned in lines 1 and 2 above were in conformance with regulations and rules therefore as required in the current manual of survey instructions of the United States Department of the Interior, Bureau of Land Management or by a decree of a Court of Law and/or that the corner points mentioned in lines 3, 4 and 5 above were in conformance with the rules of the Michigan Board of Land Surveyors or by a Decree of a Court of Law; established, re-established, monumented, re-monumented, recovered, found as expressed below:

NOTE: Not more than 4 corners, all in the same town and range, may be recorded on this certificate.

A. Description of original monument and accessories and/or subsequent restoration:

G 6
June 29, 1973
PA 74 Recordation by Delmer E. Porter P.S. 15410
*east 1/2" rod at intersection fence corner S
Found original witness 12" Cedar N75degE 11.5 links
Part C 1/2" rod
4" Cedar N15 deg E 61.30'
6" Cedar S75deg E 60.90
12" Cedar N75deg E 11.5 links

G 7
September 29 1978
P.A. 74 Recordation by Delmer E. Porter P.S. 15410

1/2" rod in monument box
N46deg W 76.45' Elm Stump
S11deg E 83.19' 12" Maple
S40degW 53.42' P. Pole

SURVEY &
REMONUMENTATION

FEB 12 2001

SECTION

B. Description of corner evidence found and/or method applied in restoring or reestablishing corner:

G 6
found 1/2" iron rod and RLS 15410 cap at remnants of old post
Witness trees from June 29, 1973 recordation
m.N20°E 61.20' 9" Cedar
S70°E 61.12' P.S. 21559 tag in 12" twin Cedar

G 7
found 1/2" rod in monument box
Witnesses:
N46°W 76.45' Elm stump
S40°W 53.42' RLS 15410 tag in telephone pole

Ratified by Peer Group
in accordance with P.A. 345

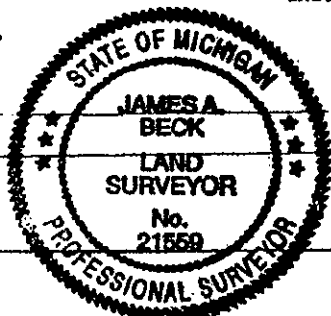
Chairman *Norman J. Quain*
Date 12-11-00

C. Description of monument for corner and accessories established to perpetuate locating the position of the corner:

G 6 1/2" iron rod and RLS 15410 cap at remnants of old post
N20°E 61.20' P.S. 21559 tag in 9" Cedar
N60°E 34.42' P.S. 21559 tag in 10" Spruce
S70°E 61.12' P.S. 21559 tag in 12" twin Cedar
S81°W 22.23' P.S. 21559 tag in 2-1/2" White Pine
corner falls at SE corner of clearing opposite SE corner of pond at fence East & West and new posts South

G 7 1/2" rod & P.S. 21559 cap in monument box
Witnesses:
N46°W 76.45' Elm stump
S11°E 82.55' P.S. 21559 tag in 18" Maple
S40°W 53.42' RLS 15410 tag in telephone pole
N16°E 82.34' P.S. 21559 tag in 24" deciduous tree
N40°W 80.75' P.S. 21559 tag in 9" Maple
corner falls 4' + or - South of center of E-W blacktop road and 22' + or - Easterly of 2 rut road North

Signed by James A. Beck P.S. 21559
Surveyor's Michigan License No. _____



Date Nov. 6, 2000

FORM APPROVED BY MICHIGAN STATE BOARD OF LAND SURVEYORS, JUN. 25, 1973
REVISED JULY 14, 1975
REVISED JAN. 1, 1983

726-00