

FEB 12 2001

YEAR 2000 PRESQUE ISLE COUNTY, STATE OF MICHIGAN REMONUMENTATION

LAND CORNER RECORDATION CERTIFICATE
Filing Requirement of Act 74, Mich. P.A. 1970

SECTION

For corners in
PRESQUE ISLE
(County)

Located In: Corner Code #

PRESQUE ISLE COUNTY
RECORDED

2000 DEC 11 AM 9:46

Janet M. Jamit
REGISTER OF DEEDS

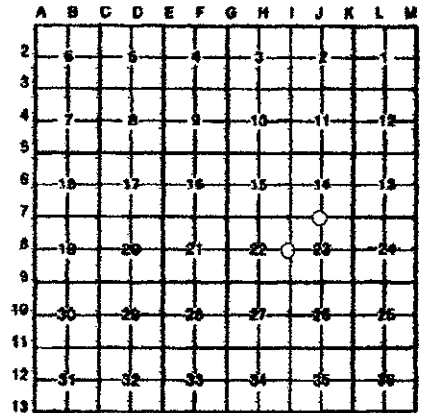
Register of Deeds Stamp & File Number

- 1. Public Land Survey T36N R2E 18
T36N R2E J7
T R
T R
2. Property Controlling in Section S T R
S T R
3. Miscellaneous Property in Sec. S T R
S T R

- 4. Lot No. Recorded Plat
5. Private Claims

James A. Beck In a field survey on Sep 28 & Oct 9 2000
do hereby certify that under requirements of P.A. 74, Michigan P.A. of 1970, the corner points mentioned in lines 1 and 2 above were in conformance with regulations and rules therefore as required in the current manual of survey instructions of the United States Department of the Interior, Bureau of Land Management or by a decree of a Court of Law and/or that the corner points mentioned in lines 3, 4 and 5 above were in conformance with the rules of the Michigan Board of Land Surveyors or by a Decree of a Court of Law; established, re-established, monumented, re-monumented, recovered, found as expressed below.

NOTE: Not more than 4 corners, all in the same town and range, may be recorded on this certificate.



- A. Description of original monument and accessories and/or subsequent restoration:
18 April 30, 1975 P.A. 74 by Delmar Porter P.S. 15410 J7 October 19, 1988 P.A. 74 by Ronald Blecher P.S.
1" pipe 22428
N15°W 15.45' 4" Maple
N35°E 18.31' 12" Maple (old witness)
West 1.76' 14" Aspen (old witness)
1/2" iron rod
S30°E 95.10' 12" Cedar (old witness)
S 30°E 95.10' 12" Cedar
N15°E 32.35' 4" Cedar
N64°W 66.27' 5" Cedar

- B. Description of corner evidence found and/or method applied in restoring or reestablishing corner:
18 found 1" pipe, set P.S. 21559 cap in pipe J7 found 1/2" iron rod, set P.S. 21559 cap
N15°W 15.45' tag in 6" Maple
N35°E 18.31' tag in 12" Maple
West 1.76' 16" Aspen
N18°E 32.35' 6" Cedar (old tag grown over)
S22°E 95.10' 14" Cedar (old tag grown over)

Ratified by Peer Group
in accordance with P.A. 345
Chairman Norman J. Quance
Date 12-11-00

- C. Description of monument for corner and accessories established to perpetuate locating the position of the corner:
18 October 9, 2000 Remonumentation
1" pipe and P.S. 21559 cap in pipe
Witnesses:
N15°W 15.45' P.S. 22428 tag in 6" Maple
N10°E 24.65' P.S. 22428 tag in 11" Aspen
N35°E 18.31' P.S. 22428 tag in 12" Maple
West 1.76' 16" Aspen
S25°E 27.70' P.S. 21559 tag in 6" Maple
Corner falls in hardwood area in brushed line to North
and South
J7 September 28, 2000 Remonumentation
1/2" iron rod and P.S. 21559 cap
Witnesses:
N18°E 32.25' P.S. 21559 tag in 6" Cedar (old tag grown over)
N61°E 50.80' P.S. 21559 tag in 4" Red Pine
S22°E 95.10' P.S. 21559 tag in 14" Cedar (old tag grown over)
S40°E 92.30' P.S. 21559 tag in 14" Cedar
N58°W 65.33' P.S. 21559 tag in 9" Cedar
corner falls in North lane of blacktop roadway
6' + or- North of center of pave

Signed by James A. Beck P.S. 21559
Surveyor's Michigan License No.

Date Nov. 7, 2000

