

2354

PRESQUE ISLE COUNTY
RECORDED

2000 PRESQUE ISLE COUNTY, STATE OF MICH., REMONUMENTATION
LAND CORNER RECORDATION CERTIFICATE
Filing Requirement of Act 74, Mich. P.A. 1970

2000 OCT 30 PM 3: 28

Janet M. Lamb
REGISTER OF DEEDS

For corners in

Presque Isle (County)	Located In:	Corner Code #
1. Public Land Survey	T 35N R 2E	J-9 ✓
	T 35N R 2E	J-11
	T R	
	T R	
2. Property Controlling in Section	S T R	
	S T R	
3. Miscellaneous Property in Sec.	S T R	
	S T R	

SURVEY &
REMONUMENTATION

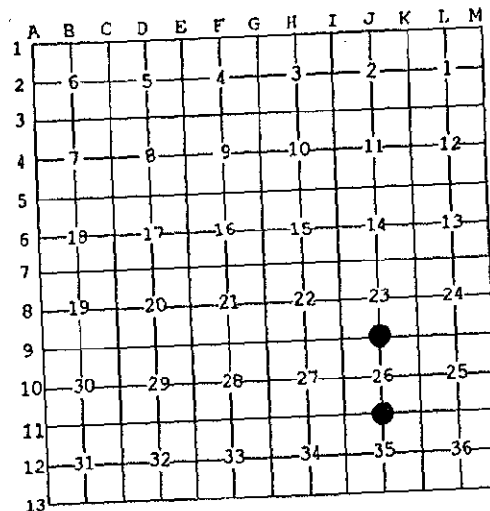
FEB 12 2001

SECTION
Register of Deeds Stamp & File Number

- 4. Lot No. _____, Recorded Plat _____
- 5. Private Claims _____

I, Delmer E. Porter, in a field survey on 09/6/00, 19____ do hereby state that under requirements of P.A. 74, Michigan P.A. of 1970, the corner points mentioned in lines 1 and 2 above were in conformance with regulations and rules therefore as required in the current manual of survey instructions of the United States Department of the Interior, Bureau of Land Management or by a decree of a Court of Law and /or that the corner points mentioned in lines 3, 4 and 5 above were in conformance with the rules of the Michigan Board of Land Surveyors or by a Decree of a Court of Law; established, re-established, monumented, recovered, found as expressed below:

NOTE: Not more than 2 corners, all in the same town and range, may be recorded on this certificate.



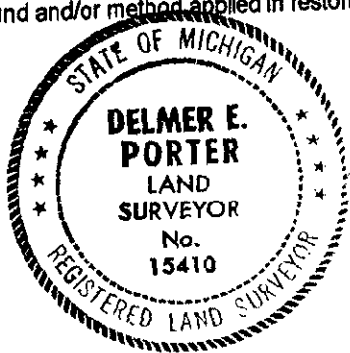
A. Description of original monument and accessories and/or subsequent restoration:

J-9
1" PIPE
52.75' TO E-W FE
82.75' TO N-S FE
N 05° E 55.29' 6" BIRCH
N 60° W 98.92' FE COR
N 80° W 108.56' 9" BIRCH
S 15° W 71.55' 8" BIRCH

J-11
1" PIPE
N 26° E 51.88' 11" POPLAR
N 40° W 79.98' 12" TWIN ELM
N 61° W 58.47' 6" APPLE
NORTH 18.62' FE COR
SOUTH 28.42' FE COR

B. Description of corner evidence found and/or method applied in restoring or reestablishing corner:

J-9
FOUND 1" PIPE
NO WITNESSES REMAINING
LOCATED FROM PREVIOUS SURVEYS



J-11
FOUND 1" PIPE
N 49° W 55.69' 8" POPLAR (BISCHER TAG)
S 43° W 29.95' TWIN ELM 11" (BISCHER TAG)
S 03° W 28.40' FE COR (BISCHER TAG)

Ratified by Peer Group
in accordance with P.A. 345

Chairman *Norman J. ...*
Date 10/27/00

C. Description of monument for corner and accessories established to perpetuate locating the position of the corner:

J-9
1" PIPE
S 84° W 73.15' 9" MAPLE
N 23° W 69.40' 12" POPLAR
N 19° E 61.10' 4" BALSAM
S 57° E 51.87' 8" BIRCH

J-11
1" PIPE
N 49° W 55.69' 8" POPLAR
S 43° W 29.95' 11" TWIN ELM
S 03° W 28.40' FE COR
N 09° E 29.17' 6" POPLAR

*WITNESS TAGS & NAILS USED.

Signed by *Delmer E. Porter*
Surveyor's Michigan License No. 15410

Date 10/5/00